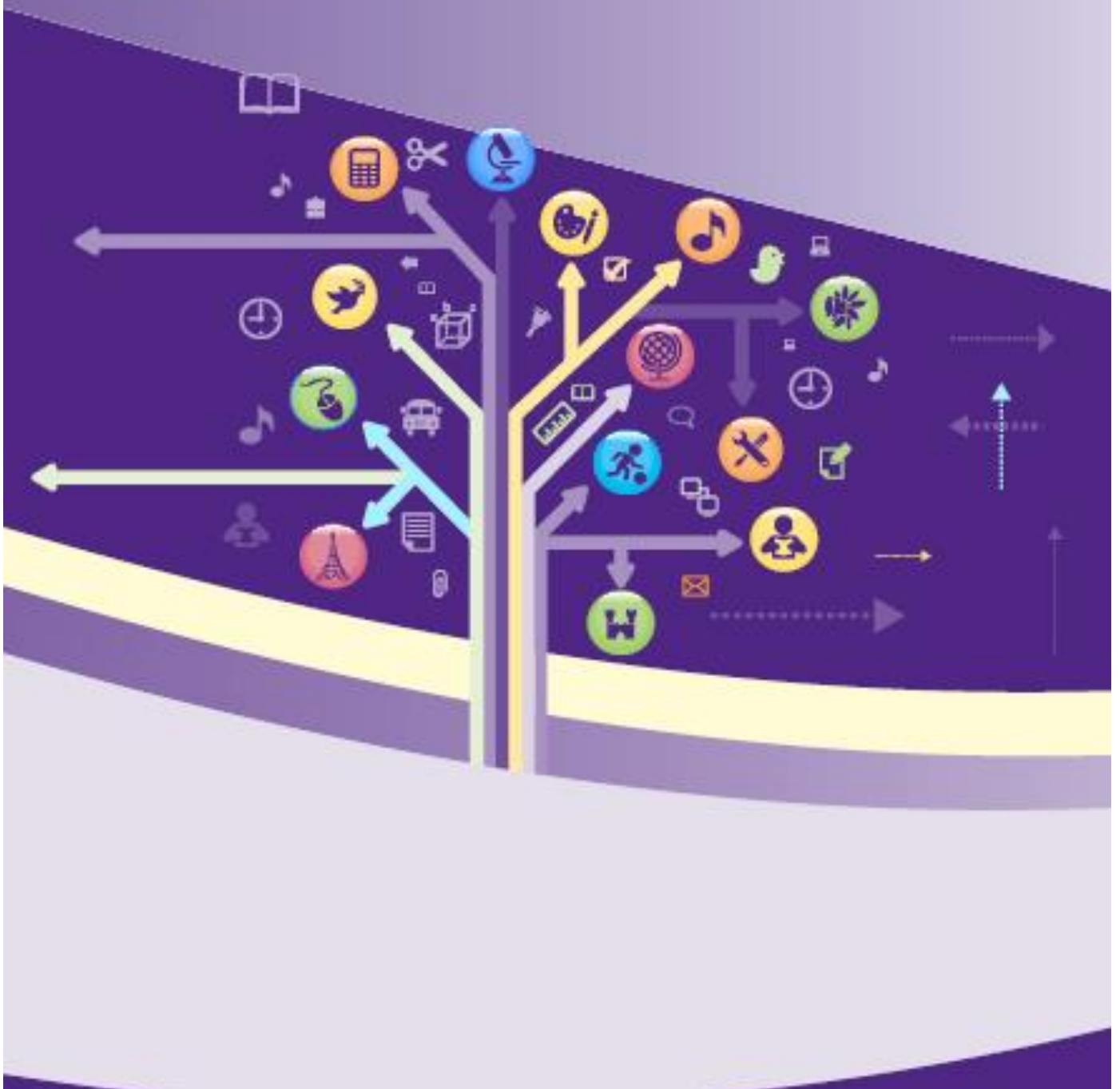


Adroddiad Blynyddol y Llywodraethwyr I'r Rhieni/Gwarcheidwaid:
Hydref 2016

Governors' Annual Report to the Parents/Guardians:
October 2016



AELODAU'R CORFF LLYWODRAETHOL MEMBERS OF THE GOVERNING BODY

Aelodaeth is-bwyllgorau / Sub-committee membership

Cynrychiolydd yr Awdurdod	Cyng J I Williams	Cyllid ac Adeiladau / Buldings and Finance
Cynrychiolydd yr Awdurdod	Cyng R G Harris	Cyllid ac Adeiladau / Buldings and Finance
Cynrychiolydd yr Awdurdod	Cyng J T O Davies	Cwricwlwm a Staffio / Curriculum and Staffing
Cynrychiolydd yr Awdurdod	Cyng E Davies	Cyllid ac Adeiladau / Buldings and Finance
Cynrychiolydd yr Awdurdod	Mr Barrie Jones	Cyllid ac Adeiladau / Buldings and Finance
Rhiant Lywodraethwr	Mrs B V Munster	Cwricwlwm a Staffio / Curriculum and Staffing
Rhiant Lywodraethwr	Mr P Clarke	Cwricwlwm a Staffio / Curriculum and Staffing
Rhiant Lywodraethwr	Mrs Elin Jones	Is-Gadeirydd
Rhiant Lywodraethwr	Mrs Sarah Williams	Cyllid ac Adeiladau
Rhiant Lywodraethwr	Mrs Elin W Jones	Cwricwlwm a Staffio / Curriculum and Staffing
Rhiant Lywodraethwr	Mr A M Williams	Cyllid ac Adeiladau / Buldings and Finance
Llywodraethwr Cymunedol	Mrs A C Jones	Cwricwlwm a Staffio / Curriculum and Staffing
Llywodraethwr Cymunedol	Mr G Tobias	Cyllid ac Adeiladau / Buldings and Finance
Llywodraethwr Cymunedol	Cyng S J Walters	Cwricwlwm a Staffio / Curriculum and Staffing
Llywodraethwr Cymunedol	Mrs Rhian Evans	Cadeirydd
Athro Llywodraethwr	Mr Tim Jenkins	Cyllid ac Adeiladau / Buldings and Finance
Athro Llywodraethwr	Mr Geraint Thomas	Cyllid ac Adeiladau / Buldings and Finance
Staff Llywodraethwr	Ann Herbert	Cyllid ac Adeiladau / Buldings and Finance
Pennaeth	Mrs Jane Wyn	

Annwyl Riant / Warchodwr,

Mae'n bleser gennyf gyflwyno Adroddiad Blynyddol y Llywodraethwyr am y flwyddyn academaidd yn gorffen Haf 2016 i'ch sylw. Cafodd yr Ysgol flwyddyn lwyddiannus arall a charwn longyfarch pawb sydd yn gysylltiedig â'r Ysgol ar y llwyddiant hwn. Dyma'r pedwerydd flwyddyn yn olynnol i'r ysgol weld cynnydd yn ei chanlyniadau TGAU: yn wir eleni cafwyd y canlyniadau gorau yn hanes yr Ysgol.

Ysgol 3 - 19 gyntaf Cymru. Mae'n gyfnod cyffrous i'r ysgol, ac rydym yn gweld bod y model yma o ddarparu addysg mewn ysgol gydol oes yn un a'i hefelychir mewn sawl ardal yng Nghymru erbyn hyn. Yn wir, cafwyd sawl cais gan ysgolion eraill o gwmpas Cymru i ymweld â Bro Pedr er mwyn trafod trefniant yr ysgol. Pleser hefyd yw nodi bod Bro Pedr wedi'i dewis fel un o Ysgolion Arloesol Cymru o dan gynllun cyffrous Llywodraeth Cymru, sef Y Fargen Newydd.

Mae'r Llywodraethwyr wedi cytuno ac yn cefnogi gweithredu Cynllun Datblygu eang a chynhwysfawr yr ysgol, sydd yn amlinellu ystod o strategaethau i barhau i gynnal ac i godi safonau yn yr ysgol. Yr ydym am gynnal yr ethos hapus sydd yn bodoli ym Mro Pedr, ac ar yr un pryd gefnogi pob gweithgaredd sydd yn hyrwyddo datblygiad pob plentyn yn Ysgol Bro Pedr. Yn ychwanegol fe roddwyd sylw i adeiladau'r ysgol ac i adnoddau yn yr ystafelloedd dosbarth, yn ogystal â chyfeirio at ystod o bolisiau newydd eleni.

Rydym yn dra ddiolchgar am y cymorth a dderbyniodd yr ysgol gan amryfal gyrff ac unigolion; yr ydym yn gwerthfawrogi cefnogaeth y rhieni/gofalwyr ar bob achlysur ac hefyd yr ydym yn ddiolchgar am waith swyddogion y Gymdeithas Rieni ac Athrawon, ac i'r Fforwm Rhieni. Carwn fanteisio ar y cyfle hwn i ddiolch i'r Pennaeth, yr athrawon a'r staff am eu gwaith diflino, yn ogystal â'r plant am eu llwyddiannau academaidd ac allgyrsiol yn ystod y flwyddyn a aeth heibio. 'Rwyf yn dymuno'n dda iddynt yn ystod y flwyddyn nesaf.

Os ydych am drafod unrhyw fater sydd yn yr adroddiad, yna fe ddylech wneud hynny drwy gysylltu â'r Pennaeth yn uniongyrchol.

Dear Parent / Guardian,

I have pleasure in presenting the Annual Governors Report to Parents for the academic year ending Summer 2016. The school has had another successful year, and I would like to congratulate everyone who is connected to the school on this success. This is the fourth consecutive year that the school has seen an increase in its GCSE results: indeed this summer's results were the best in the school's history.

The first 3 - 19 school in Wales. It is an exciting period for the school, and we are already seeing that this model of providing an all-through education is one that is being replicated in many parts of Wales. Indeed the school has received a number of requests from other schools who want to visit to discuss the school's organisation. It is also my pleasure to congratulate Bro Pedr on being selected as a Pioneer School under the Welsh Government's New Deal initiative.

The Governing Body has agreed to implement the school's comprehensive Improvement Plan, which outlines a range of strategies to continue to support and to raise standards at the school. We wish to preserve the school's very happy ethos and to support all activities which promote the development of every child at Bro Pedr. Additionally, there has been a significant investment in the school buildings and in resources in the classroom, as well as the drafting of a number of new school policies.

We are thankful for the support that the school has received from a range of institutions; we appreciate the support of parents/guardians, and also the members of our Parent and Teachers Association, and the Parents' Forum. I would also like to use this opportunity to thank the Head and the Staff for their untiring work, and also to the pupils for their academic and extra-curricular successes over the year. I wish them well over the coming year.

Should you wish to discuss any matter in the report, then you should do so by contacting the Headteacher directly.

Yr eiddoch yn gywir / Yours sincerely

Rhian Haf Evans, Cadeirydd y Corff Llywodraethol / Chair of Governors

Polisiau'r Ysgol - 2015/16 - School Policies

Mae'r ysgol a'r Corff Llywodraethol wedi adolygu a chytuno ar y polisiau canlynol:
The school and the Governing Body have reviewed and agreed on the following policies:

Polisiau Dysgu, Addysgu, Asesu & Cwricwlwm

Learning, Teaching, Assessment and Curriculum Policies

1. Polisi Llythrennedd Ysgol-Gyfan/ Whole-school Literacy Policy,
2. Polisi MAT yn gryno {MAT (More Able and Talented) in a Nutshell
3. Model Haeddiant Bro Pedr Entitlement Model
4. Polisi Addysg Ddwyeithog/ Bilingual Education Policy
5. Polisi Technoleg Gwybodaetha Chyfathrebu / ICT Policy (yn cynnwys / including:
Defnydd Diogel o'r We / Safe Use of the Internet
6. Addoli ar y Cyd/ Collective Worship
7. Polisi Llyfrgell/ Library Policy
8. Addysg Rhyw/ Sex Education
9. Polisi Cwricwlwm/ Curriculum Policy
10. Polisi Dysguac Addysgu / Teaching and Learning Policy (+ Llawlyfr/ Handbook)
11. Llawlyfr Arsylwiac Arfarnu Gwersi / Lesson Observation and Evaluation Handbook
12. Polisi Asesu ar gyfer Dysgu / Assessment for Learning Policy
13. Polisi Marcio / Marking Policy
14. Polisi Gwaith Cartref / Homework Policy
15. Polisi Sefyll Arholiadau Allanol/ Policy in respect of External Examinations
16. Polisi Codi Tâl / Charging and Remissions Policy
17. Polisi Bwyda Ffitrwydd / Food & Fitness Policy
18. Polisi Mentegarwch / Entrepreneur skills Policy
19. Polisi Gyrfaoedd / Careers Education Policy
20. Polisi Datblygiad Cynladwy / Sustainable Development Policy,
21. Polisi Rhifedd / Numeracy Policy
22. Polisi Anghenion Dysgu Ychwanegol/ Additional Learning Needs Policy
23. Polisi ABCh / PSHE Policy
24. Polisi Y Cyfnod Sylfaen / Foundation Phase Policy

Cefnogi a Rheoli Ymddygiad a Pherfformiad Disgyblion

Supporting and Managing Pupil Behaviour and Performance

25. Polisi Anghenion Dysgu Ychwanegol a Chynhwysiant / ALN & Inclusion Policy
26. Polisi Cyfeillgarwch, Gwrth-fwlio a Gwrth-hiliaeth / Friendship, Anti-Bullying and Anti-Racism Policy,
27. Cytundeb Gwrth-Fwlio / Anti-Bullying Contract
28. Polisi Presenoldeb / Attendance Policy
29. Polisi Gwobrwyo / Rewards Policy
30. Polisi Ymddygiad / Behaviour Policy
31. Ymyrraeth Ymddygiadol Cynnar / Early Behavioural Intervention
32. Dulliau Adferol / Restorative Approaches
33. CAU Ymddygiad / Behavioural IEP (Indep. Educ Plan)
34. Categoriâu o gefnogaeth ymddygiad / Categories of behavioural support,
35. Model 5 Cam / 5 Consequence Model
36. Siart camau i ddelio gydag ymddygiad annerbyniol / Chart showing steps to address unacceptable
37. Papur trafod: Taclo ymddygiad anfoddog / Discussion paper: Tackling Disaffection
38. Defnyddio Ymyrraeth Corfforol / The use of Physical Intervention,
39. Polisi Cwnsela Disgyblion / Pupil Counselling Policy
40. Polisi Cymraeg / Saesneg fel Iaith Ychwanegol- Welsh/English as an Additional Language Policy
41. Protocol y Tîm o Amgylch y Teulu / Team Around the Family Protocol

Diogelu ein Disgyblion a'n Staff / Safeguarding our Pupils and Staff

42. Polisi Amddiffyn Plant / Child Protection Policy
43. Polisi ar gyfer disgyblion ag anghenion meddygol / Policy for pupils with medical needs,
44. Polisi Cyffuriau / Drugs Policy
45. Polisi Iechyd a Diogelwch Disgyblion ar Ymweliadau Addysgol / School Visits Policy
46. Polisi Iechyd a Diogelwch / Health and Safety Policy,
47. Polisi Diogelwch ar Ffordd / Road Safety Policy
48. Polisi Tywydd Garw / Inclement Weather Policy
49. Polisi Defnydd y Rhyngwrwd / Internet Use Policy
50. Polisi Argyfwng Digwyddiad Difrifol / Critical Incident Policy
51. Cynllun Hygyrchedd / School Access Plan
52. Cynllun Gwella Diogelu Safle / Site Safeguarding Plan
53. Protocol Diogelwch Haul / Sun Safety Protocol
54. Polisi Defydd ac Hylendid Toiledau / Toilets use and hygiene policy
55. Polisi Gwisg Ysgol/ School Uniform Policy

Polisi Cefnogi a Rheoli Staff / Supporting and Managing Staff

56. Polisi ymdrin â Newid Sefydliadol / Policy for Handling Organisational Change
57. Polisi Cyflogau Athrawon / Teachers' Pay Policy
58. Polisi Hyfforddiant a Datblygu Staff / Staff Development and Training Policy,
59. Polisi Rheoli Absenoldeb Staff / Managing Staff Absence Policy,
60. Strwythur Ail-fodelu'r Gweithlu / Workforce Re-Modelling Structure,
61. Polisi Delio a Straen Sefydliadol / Policy for Managing Organisational Stress,
62. Polisi Mamolaeth / Maternity Policy
63. Gweithdrefn Achwynion ar gyfer Staff yr Ysgol / Staff Complaints Procedure
64. Protocol "Gwarchod Prin" / Rarely Cover Protocol,
65. Polisi Rheoli Perfformiad / Performance Management Policy,
66. Protocol Athrawon Cyflenwi / Supply Teachers Protocol

Materion Llywodraethol / Governance Issues

67. Y Weithdrefn Gwyno / Dealing with Complaints Procedure,
68. Polisi Cydraddoldeb / Equality Plan,
69. Protocol Derbyn Disgyblion Newydd / Protocol to register New Pupils,
70. Cynllun Cyhoeddi Rhyddid Gwybodaeth / Freedom of Information Scheme,
71. Polisi Cyllid / Budgeting Policy
72. Polisi Derbyn / Admissions Policy
73. Cynllun Gweithredu'n Dilyn Arolwg / Action Plan following Inspection,
74. Lwfansau Llywodraethwyr / Governors' Allowances Protocol,
75. Offeryn Llywodraethu / Article of Governance
76. Cofrestr o Fuddiannau Busnes y Pennaeth & Llywodraethwyr / Head & Govs. Business Interests Register
77. Crynodeb o Dargedau'r Ysgol – Meintiol / Summary of School Targets - Numerical
78. Polisi Chwythu Chwiban / Whistleblowing Policy
79. Cynllun Datblygu Uywodraethwyr / Governors' Development Plan, (Gwobr Efydd/ Bronze Award)

Gweithio Gyda Phartneriaid / Working With Partners

80. Cynllun Pontio / Transition Plan
81. Cytundeb Cartref-Ysgol / Home-School Agreement
82. Polisi Ysgol Teulu Gyfeillgar / Family Friendly School Policy

Gall rhieni/gofalwyr ofyn i weld unrhyw bolisi perthnasol. Bydd y polisiau perthnasol yn cael eu gosod ar wefan yr ysgol. / Parents can request to see any relevant policies. All relevant policies will be placed on the school website.

Bywyd Prysur Bro Pedr / Bro Pedr's Busy Life

Mae bywyd ysgol llawer iawn o'n disgyblion yn yr Adrannau Iau ac Uwchradd yn brysur, yn llawn ac yn gyffrous. Cawn gip ar lwyddiannau'n disgyblion yn rheolaidd yn nhudalennau ein cylchrawn ysgol **Llais Pedr**. Medrwyh weld yr holl gopiau ar wefan yr ysgol. Fel arfer, rydym yn ddyledus i waith diflino ein Llyfrgellydd Ms Heini Thomas am gasglu, coladu ac argraffu holl newyddion yr ysgol yn Llais Pedr.

*A large number of our pupils in both the Junior and Secondary Departments enjoy a busy, full and exciting life at school. We get a snapshot of our pupils' successes each term in our school magazine **Llais Pedr**. You can see all the copies on our school website. As usual, we are indebted to Miss Heini Thomas our Librarian for her tireless work in collecting, collating and printing all the school news in Llais Pedr.*

Amddiffyn Plant / Child Protection

Mae diogelwch ein disgyblion yn parhau i fod yn un o brif ffocysau'r ysgol. Ein Swyddog Diogelu Plant yw Mrs Bethan Payne (Adran Uwchradd) ac, yn ei habsenoldeb, Mr J D Williams ac yn yr Adran Iau Mrs Debbie Clarke. Ein Llywodraethwr Amddiffyn Plant Enwebedig yw Mrs Elin T Jones.

The safety of our pupils remains one of our prime focuses. Our Child Protection Officer is Mrs Bethan Payne (Secondary Department), and in her absence Mr J D Williams, and in the Junior Department Mrs Bethan Payne, with Mrs Debbie Clarke in her absence. Our Nominated Child Protection Governor is Mrs Elin T Jones.

Toiledau'r Ysgol / The School's Toilet Facilities

Mae'r ysgol yn ymfalchïo yn hylendid ein tai bach, ac yn y modd y cânt eu parchu gan ein disgyblion. Cânt eu glanhau'n rheolaidd iawn, gydag unrhyw nam yn cael ei drwsio'n syth. Mae gan yr ysgol bolisi ar ddefnydd y tai bach.

The school takes great pride in the hygiene of its toilet facilities, and in the way that pupils respect the facility. They are cleaned very regularly with any defects rectified immediately. The school has a policy covering the use of school toilets.

Cynllun Mynediad / Access Plan

Mae'r ysgol wedi cynnal awdit mynediad i'r ysgol ac wedi creu Cynllun Mynediad, sy'n arddangos ymrwymiad yr ysgol i sicrhau mynediad i unrhyw ddisgybl neu oedolyn sydd ag anabledd, o fewn ein gallu i wneud hynny.

The school has undertaken an access audit and has drafted an Access Plan, which demonstrates the school's commitment to ensuring access to any pupil or adult with a disability, within our ability to do so.

Cyngor Ysgol: Llais ein Disgyblion

Mae'r Cyngor Ysgol 3-19 wedi cymryd rhan flaenllaw eto eleni o ran gwneud penderfyniadau ar faterion strategol sy'n effeithio ar yr ysgol. Dyma'r uchafbwyntiau:

- Aelodau'r Cyngor Ysgol yn rhan allweddol o bwyllgorau penodi staff.
- Datblygwyd y cysylltiad rhwng y Cyngor Ysgol a'r Pwyllgor ECO.
- Cafodd y Cyngor Ysgol fewnbwn i'r 'Wers Bro Pedr', Cynllun Gwobrwyo'r Ysgol, y Polisi Asesu a pholisi'r ysgol ar fwyta'n iach,

- Trefnwyd 'Diwrnod Hwyl' ar gyfer disgyblion blynyddoedd 7-10 a chodwyd dros £800 ar gyfer Canolfan y Bont a'r Uned Sgiliau.
- Cafodd aelodau'r Cyngor a disgyblion eraill o Flwyddyn 10 hyfforddiant gyda Dulliau Adferol i hybu cymodi rhwng disgyblion.
- Bu aelodau'r Cyngor yn trafod newidiadau i wisg swyddogol yr ysgol trwy ategu fflis.

Pwyllgor Eco

- Mae'r Ysgol wedi ennill Y Faner Werdd,
- Mae Ysgol Bro Pedr wedi derbyn y fraint o fod yn Ysgol Fasnach Deg Y Mis (drwy Gymru) am ein gweithgareddau Masnach Deg ac wedi cael cynnig i ymuno â phroject 'Fairtrade Voices'.
- Prosiect Lesotho - Connecting Classrooms: wedi llwyddo ennill grant i barhau â'r bartneriaeth bwysig ag Ysgol St James yn Mokhotlong, Lesotho (£3,000).
- Lleihau Gwastraff - Pwyllgor yn awyddus i geisio lleihau gwastraff yn yr ysgol.
- Gwobr Ysgol Rhyngwladol 2012-2015 - Mae'r Wobr Ysgolion Rhyngwladol yn gynllun achredu yn seiliedig ar waith rhyngwladol o fewn y cwricwlwm - gan y Cyngor Prydeinig.
- Comenius – Miss Geinor Jones wedi gwneud ennill grant Comenius (€24,000) er mwyn datblygu cysylltiadau Ewropeaidd. Cydweithio gydag Ysgol Bro Myrddin, Ysgol yn Yr Eidal, Cyprus a dwy ysgol yn Denmarc.
- Cynllun Aur: Cynaliadwyedd...:150 ddisgybjion blwyddyn 12 yn mynd i astudio modwl 'Achub Paradwys- Cynaliadwyedd' - Prifysgol Cymru Y Drindod Dewi Sant

School Council: The Voice of our Pupils

The 3-19 School Council has taken a leading role again this year in terms of making important decisions on strategic matters affecting the school. Here are the highlights: The School Council members have played an important role in the process of appointing staff.

- *The connection between the School Council and the ECO Committee has been strengthened this year.*
- *The School Council have had input into the 'Bro Pedr lesson', the school's new Awarding/Rewarding system and the school's Assessment Policy and the healthy eating agenda.*
- *A fun day was organised for Year 7 – 10 pupils and over £800 was raised for Canolfan Y Bont and the Skills' Unit.*
- *School Council Members and other Year 10 pupils received Restorative Practice training to promote reconciliation between pupils.*
- *School Council members have been in discussion with the school in respect of the addition of an official school fleece to our uniform.*

Eco Committee

- *The school has been awarded Green Flag status,*
- *Ysgol Bro Pedr has received the honour of being named FairTrade School of the Month (throughout Wales) for our Fair Trade activities and we have been invited to join the 'Fairtrade Voices' project.*
- *Lesotho Project - Connecting Classrooms: have been awarded a grant to continue the partnership with St James' School in Mokhotlong, Lesotho (£3,000).*
- *TacklingWaste - The Committee is eager to reduce the amount of waste in the school.*
- *International SchoolPrize 2012-2015 -The International Schools' Prize awards schools for including work with an international focus in the curriculum. The British Council run this scheme.*

- *Comenius – Miss Geinor Jones has submitted a successful bid for a Comenius grant (€24,000) in order to develop European connections. The aim is to work with Bro Myrddin, a school in Italy, Cyprus and two schools in Denmark,*
- *University of Trinity Saint David: Accredited Modules. Sustainability Module :-150 students from Year 12 are going to study a module entitled, 'Rescuing Paradise - Sustainability'.*

Darpariaeth Chwaraeon a Chwaraeon yn Allgyrsiol

Mae'r ysgol yn cwrdd â'i gofynion stadudol o safbwynt ein darpariaeth cwricwlaidd ar draws pob Ffes. Yn ogystal â hynny, mae'n disgyblion yn cael ystod o gvffleoedd allgyrsiol eang, sy'n cael eu darparu gan nifer o'n staff a gan staff y cynllun 5/60. Mae Addysg Gorfforol yn bwnc poblogaidd yn yr Adran Uwchradd gyda nifer sylweddol o ddisgyblion yn ei ddewis fel pwnc TGAU a/neu Safon Uwch. Mae disgyblion yr ysgol yn cystadlu'n rheolaidd yn erbyn ysgolion eraill mewn sawl camp. Rydym yn trafod ein darpariaeth yn rheolaidd fel rhan o agenda'r Cyngor Ysgol, Bydd materion yn ymwneud ag ymarfer corfforol a ffitrwydd yn rhan o'r cwricwlwm ABCh. Braf yw nodi bod yr ysgol wedi elwa'n fawr o apwyntiad Mr Jack Rees fel ein swyddog Datblygu Rygbi newydd (mewn cydweithrediad ag Undeb Rygbi Cymru).

Sports' Provision and Extra-Curricular Sport

The school meets its statutory requirements in terms of our curricular provision across each Phase. Additionally, our pupils get a range of extra-curricular opportunities, which are provided by a number of our staff and by the staff of the 5/60 scheme. Physical Education is a popular subject in the Secondary Department with a significant number of our students choosing it for GCSE and / or A Level. Pupils from the school compete regularly against other schools in several sporting events. We discuss our provision regularly in the School Council meetings. Matters relating to physical exercise and fitness are part of our PHSE curriculum. It is great to report that the school has benefitted greatly as a result of the appointment of Mr Jack Rees our Rugby Development Officer (in co-operation with the Wales Rugby Union).

Categori iaith yr Ysgol

Dynodir yr ysgol yn Ddwyieithog, Dwy Ffrwd yn unol â pholisi iaith yr Awdurdod Addysg Lleol.

The school's language category

The school is designated as a Bilingual School with two linguistic streams in accordance with the Education Authority's language policy.

Lle'r Gymraeg yn y Cwricwlwm

Mae'r ysgol wedi mabwysiadu ac yn cefnogi Polisi'r Sir tuag at feithrin yr iaith Gymraeg yn ffurfiol ac yn anffurfiol o fewn yr ysgol. Ein nod yw sicrhau bod pob disgybl yn gwneud cynnydd ar draws continiwm ieithyddol wrth iddynt symud o'un cyfnod allweddol i'r llall, a'u bod yn gadael yr ysgol mor ddwyieithog a phosib ac yn barod i gyfranogi yn ein cymuned ddwyieithog. Credwn fod llawer o fanteision i'ch plentyn o fod yn ddwyieithog ac y dylid sicrhau dilyniant a pharhad ieithyddol o'r cynradd i'r uwchradd. Bydd addysg trwy gyfrwng y Gymraeg a'r Saesneg yn rhan naturiol o gwrs addysg pob plentyn trwy gydol ei amser yn yr ysgol uwchradd. Mi fydd cyfrwng y dysgu ym Mlwyddyn 6, adroddiadau ac asesiadau athrawon yn rhoi arweiniad clir i ni am lefel a gallu ieithyddol disgyblion. Ar sail y wybodaeth yma, mi fydd disgyblion sy'n ymuno â'r ysgol yn cael eu gosod naill ai mewn dosbarth Cymraeg, lle bydd mwyafrif eu gwersi yn cael eu dysgu trwy gyfrwng y Gymraeg yn ystod CA3, neu mewn dosbarth o ddysgwyr Cymraeg lle bydd y mwyafrif o wersi yn cael eu dysgu trwy gyfrwng y Saesneg yn ystod CA3. Bydd disgyblion yn symud yn naturiol o'u hysgolion cynradd i Ysgol Fro Pedr yn seiliedig ar gyfrwng yr addysg yn yr ysgol gynradd neu yn Ffes 2. Annogwn a chefnogwn ddisgyblion yn nosbarth y dysgwyr i barhau gyda'u hymdrechion i ddysgu a defnyddio'r Gymraeg.

Fel rhan o'r Cwricwlwm Cenedlaethol, bydd pob disgybl yn astudio'r Gymraeg, naill ai fel iaith gyntaf neu ail iaith hyd at 16 oed. Bydd pob disgybl sy'n ymuno â'r ysgol yn sefyll arholiad Cymraeg lefel TGAU yn 16+ ac yn medru mynd ymlaen i Safon Uwch yn y Chweched Dosbarth.

Mae'r mwyafrif o bynciau ar gael yn y Gymraeg a'r Saesneg yng Nghyfnod Allweddol 4 ac ôl-16, ac unwaith eto rydym yn cymell datblygiad a pharhad ieithyddol.

Dros y blynyddoedd, mae disgyblion wedi ymuno â'r ysgol o lawer o wledydd gwahanol. Sicrhawn bod y disgyblion hyn yn chwarae rhan lawn ym mywyd a gwaith yr ysgol. Gwneir darpariaeth arbennig ar gyfer y disgyblion hynny nad oes ganddynt wybodaeth ddigonol o'r Gymraeg a'r Saesneg. Yn unol â pholisi'r Sir, bydd yr ysgol yn gweithredu polisi dwyieithog yn holl agweddau bywyd yr ysgol.

The Place of Welsh in the Curriculum

The school supports and adopts the County's policy with regard to the nurturing of the Welsh language both formally and informally within the school. Our aim is to ensure that pupils progress along a linguistic continuum as they move from one key stage to another and that they leave school as bilingual as possible, ready to participate in our bilingual community. We believe that there are many advantages for your child to be bilingual and we would wish to ensure the linguistic and educational progress and continuity from

the primary to the secondary phase. Education through the medium of English and Welsh should be a natural part of every child's development whilst at school. The medium of teaching in Yr. 6, teacher's reports and assessments will give a clear indication of a pupil's linguistic levels and abilities. On this basis, pupils joining the school will be placed in either a Welsh class, where the majority of their lessons will be taught through the medium of Welsh during Key Stage 3, or a Welsh learners' class where the majority of their lessons will be taught through the medium of English. Pupils will progress seamlessly from their Primary school to Ysgol Bro Pedr based on the medium of education in the Primary school or in phase 2. Pupils placed in the Welsh learners' class

will be encouraged and supported to further develop their abilities in, and use of, the Welsh language. As part of the National Curriculum, all pupils study Welsh, either first language or second language until 16 years of age. All pupils entering the school take Welsh GCSE examination level at 16+ and can carry on to Advanced level in the Sixth Form. The majority of subjects are available in both Welsh and English in KS4/ Post 16, and once again we encourage linguistic progression and continuity. Over the years, pupils join the school from many different countries and we ensure that these pupils participate fully in the life and work of the school. Special arrangements are made for those pupils who join the school and who do not have adequate knowledge of Welsh or English. In line with the County's Policy, the school will operate a bilingual policy in every aspect of school life.

Anghenion Dysgu Ychwanegol

Mae'r ddarpariaeth briodol ar gyfer anghenion addysgol ychwanegol, yn unol â threfn gyfeirio'r Awdurdod Addysg Lleol yn cael ei gweithredu, ac fe wneir yn siwr fod pob aelod o'r staff yn ymwybodol o'u dyletswyddau. Mae'r polisi'n datgan, pan fo pryder yn codi am unrhyw blentyn, 'fe'i gosodir ef/hi ar gofrestr anghenion arbennig ac fe ddilyni'r camau priodol yn unol â'r polisi yma i sicrhau y cymorth gorau i'r plentyn'. Gally cymorth yma olygu creu cynllun unigol yn yr ysgol a chydweithrediad rhwng yr athro/athrawes dosbarth a'r Cydlynnydd Anghenion Addysgol Ychwanegol, neu fe all olygu cysylltu ag asiantaethau allanol a chydweithio gyda nhw i gael y cymorth gorau. Rhennir unrhyw bryderon gyda rhieni a gwarchodwyr. Fe ddyrenir yr adnoddau yn ôl y galw. Ceir copi llawn o'r polisi yn yr ysgol ac ar Wefan yr ysgol. Islaw y mae tabl sydd yn nodi sefyllfa bresennol y Gofrestr Anghenion Dysgu Ychwanegol.

Additional Learning Needs

Appropriate provision is given to children with additional learning needs in line with the Local Authority guidelines, and all members of staff are made aware of their responsibilities in this regard. The policy states that when there is a concern about any child, he/she is put on the additional educational needs register and appropriate action is taken to give the child the best possible help. This help might necessitate creating an individual education plan in school, with input from both class teacher and the SENCO, or it could involve using the expertise of outside agencies for support. Parents are informed of any concerns and steps taken. Resources are allocated as needed. A full copy of the policy can be seen at school, and on the School's Website. Below is a table which notes the current situation regarding Additional Learning Needs (School Action, School Action+ and Statements).

	% Anghenion Addysgol Arbennig					
	2013/14		2014/15		2015/16	
	Ysgol	ALI	Ysgol	ALI	Ysgol	ALI
Gweithredu	41.1	22.3	33.5	25.4	35.0	25.4
Gweithredu +	6.7	9.2	6.9	8.2	4.8	7.1
Datganiad	4.9	2.4	5.2	2.1	4.9	1.8

* Mae'r canrannau ALI a ddangosir yma yn cynnwys holl ysgolion yr awdurdod (nid dim ond yr uwchradd).

CWRICWLWM

Argyhoeddir y Llywodraethwyr fod yr ysgol yn darparu cwricwlwm eang, cytbwys, perthnasol a gwahaniaethol. Hyrwyddwyd materion o'r fath gan gyfarfodydd penodol i drafod y cwricwlwm. Yn ogystal â hyn, mae'r Llywodraethwyr yn dal i dderbyn adroddiadau gan adrannau unigol, neu Benaethiaid Ysgol, yn eu cyfarfodydd tymhorol, ac eleni cyflwynwyd manylion a chafwyd trafodaeth ar ddatblygiadau Cynradd/Uwchradd ym meysydd Llythrennedd a Rhifedd.

CURRICULUM

The Governors are satisfied that the school provides a broad, balanced, relevant and differentiated curriculum. Matters concerning the curriculum were overseen by means of special meetings convened for that purpose. In addition to this, the Governors continued to receive termly reports from individual departments and Heads of School. This year the Governing Body received reports and had discussions on primary/secondary developments in Literacy and Numeracy.

Cwricwlwm Yr Adran Iau / Our Junior Curriculum

Mae ein cwricwlwm yn sicrhau bod pob dysgwr yn ymrwymo'n aelodau llawn o gymuned ein hysgol, ac yn cael mynediad i'r cwricwlwm ehangach a holl weithgareddau'r ysgol. Mae'r cwricwlwm yn gytbwys ac yn eang ei sylfaen, ac yn ceisio hyrwyddo datblygiad ysbrydol, moesol, diwylliannol, cymdeithasol ac emosiynol, meddyliol a chorfforol ein disgyblion, ac yn ceisio eu paratoi ar gyfer cyfleoedd, cyfrifoldebau a phrofiadau bywyd oedolyn.

Y mae'r holl agweddau yma yn clymu at ei gilydd fel jig-so ac yn darparu amrywiol gyfleoedd a phrofiadau i hyrwyddo dysgugydol-oes. Seilir ein cwricwlwm iau ar fframweithiau Cynllun Cornerstones.

Our curriculum ensures that all learners in our school are engaged as full members of the school community, accessing the wider curriculum and all school activities. It is a balanced, broad curriculum that seeks to provide the cultural, moral, social and emotional, physical and mental development of pupils and prepare them for opportunities and responsibilities in adult life. All these aspects are inter-linked very much like a jigsaw puzzle where pupils are given a variety of opportunities and experiences to promote lifelong learning. The Junior Section Curriculum is based on the Cornerstones Curriculum framework.

Y Cwricwlwm Adran Uwchradd / The Secondary Curriculum

Cyfnod Allweddol 3

Ym mlynnyddoedd 7 - 9 bydd pob disgybl yn dilyn cwricwlwm sy'n adlewyrchu gofynion y Cwricwlwm Cenedlaethol.

Blwyddyn 7

Wrth i ddisgyblion ddod i'r ysgol uwchradd, dodir hwynt mewn dosbarthiadau gallu cymysg gyda phawb yn dilyn y cyrsiau canlynol:

Cymraeg

Saesneg

Mathemateg

Gwyddoniaeth

Sgiliau

Dyluno a Thechnoleg

Ffrangeg

Cwrs Thema

TGCH

Cerdd

Addysg Gorfforol

Sgiliau

Gydag ymlacio rheoliadau'r Cwricwlwm Cenedlaethol i fod â llai o ffocws ar gynnwys, daeth y cyfle i unio modelau cwricwlwm sy'n datblygu sgiliau ein disgyblion ar gyfer gofynion dysgu gydol oes. Daw hefyd y cyfle i wella'r trosglwyddiad o fewn Ffes2 wrth barhau gydag elfen o ddysgu thematig, tebyg i'r hyn a geir ym Mlynnyddoedd 3 i 6, gan leihau'r nifer o athrawon sy'n dysgu Blwyddyn 7 a sicrhau mwy o ddilyniant a pharhad. Mae angen i ni ddysgu'n disgyblion sut i ddysgu yn hytrach na beth i'w ddysgu, a'u gwneud yn ddysgwyr annibynnol. Mae'r Cwrs Cornerstones ym Mlynnyddyn 7 yn gam tuag at y nodau hyn, wrth bwysleisio ar brosesau dysgu yn hytrach na chynnwys pynciol.

Blynnyddoedd 8 a 9

Mae'r pynciau cwricwlaidd ym Mlynnyddoedd 8 a 9 yn debyg i'r hyn a gynigir ym Mlynnyddyn 7, ond cynigir Hanes, Daearyddiaeth a Chelf yn lle'r cwricwlwm Cornerstones. Yn ogystal, mae disgyblion yn cael eu grwpio yn ôl gallu yn y Gymraeg, Saesneg, Mathemateg a Gwyddoniaeth.

Cyfnod Allweddol 4

Mae disgyblion CA4 yn parhau i ddilyn craidd y Cwricwlwm Cenedlaethol, ond cynigir ystod o bynciau dewisol yn ogystal. Mae pob disgybl yn astudio'r pynciau isod, wedi'u setio yn ôl gallu, gyda'r mwyafrif yn gweithio tuag at arholiadau Lefel 2 ar ddiwedd Blwyddyn 11.

Pynciau Craidd:	Cymraeg a Saesneg (laith)	Mathemateg
	Cymraeg Llenyddiaeth	Cymraeg Ail laith
	Saesneg laith	Saesneg Llenyddiaeth
	Gwyddoniaeth	Addysg Grefyddol
	TGCh	Y Fagloriaeth

Bydd disgyblion hefyd yn dilyn cwrs Addysg Gorfforol -di-arholiad, stadudol.

Mae pob disgybl yn cael dewis rhydd o dri phwnc pellach, yn unol ag agenda Llwybrau Dysgu. Mae'r dewis o bynciau a gynigir yn cynnwys ystod o bynciau academaidd a galwedigaethol.

Ôl-16

Mae'r mwyafrif o gyrsiau a gynigir yn y Chweched yn arwain at gymwysterau Lefel 3. Mae Bro Pedr yn cynnig dewis o 30 o gyrsiau gwahanol, gyda rhai o'r cyrsiau'n cael eu cynnig naill ai'n rhanol neu'n gyfangwbl mewn cydweithredlad gydag Ysgol Gyfun Aberaeron, yn ôl y gofyn. Mae'r Fagloriaeth Gymreig yn rhan o'r cwricwlwm craidd yn y Chweched.

Key Stage 3

In years 7, 8 and 9 all pupils follow a common curriculum largely dictated by the requirements of the National Curriculum.

Year 7

On entry to the secondary school, pupils are placed in mixed ability tutorial groups within which they receive all of their teaching. The subjects followed are:

Welsh	English	Mathematics	Scienc
Skills	Design & Technology	French	Religious Education
ICT	Music	Physical Education	Thematic Course

The relaxation of the regulations of the National Curriculum and content-driven, highly prescriptive subject orders has given us the opportunity to develop innovative curriculum models which enable our students to develop the skills necessary for life-long learning. There is also the opportunity to improve the transition within Phase 2 by continuing with an element of thematic learning similar to students' experi-

ence in Years 3 to 6 and to reduce the number of different teachers encountered by children by ensuring an element of continuity in their experience. We need to teach our pupils more about 'how' to learn rather than 'what' to learn in order that they can become truly independent learners. The Cornerstones Skills-course in Year 7 aims to achieve these objectives by devoting a significant portion of curriculum time to a focus on the process of learning rather than the content.

Years 8 & 9

The curriculum subjects are essentially the same as in Year 7 except for history, geography and art replacing the Cornerstones provision. Ability grouping is introduced to Welsh, English, Mathematics and Science.

Key Stage 4

All pupils continue to follow the National Curriculum but a range of optional subjects is offered in addition to the Core curriculum. All pupils study the following subjects, which are taught in sets according to ability and will usually sit a Level 2 examination in them at the end of Year 11:

Welsh Language	Welsh Literature	Second Language Welsh
English Language	English Literature	Mathematics
Science	Religious Studies	ICT
Welsh Bac		

In addition to these subjects, pupils follow a non-examined course in Physical Education in line with statutory requirements.

Pupils are invited to select three additional subjects in line with the increased flexibility introduced by Learning Pathways, and are given a free option choice. These are accessible to all pupils and are included in the free choice of options given to them. The choice of courses on offer include a range of academic and vocational courses.

Post-16

The majority of courses on offer in the sixth form lead to a Level 3 award. Bro Pedr offers a choice of 30 Sixth Form courses.

Some subjects are taught either wholly or partly in collaboration with Ysgol Gyfun Aberaeron, as the need arises. The Welsh Baccalaureate forms a part of the core curriculum in the Sixth Form.

Gweithredu ar ôl adolygu strategaethau

Mae Corff Llywodraethol yr ysgol yn cyfarfod yn llawn bob tymor er mwyn sicrhau fod prosesau hunanarafarnu a chynllun datblygu'r ysgol yn cael eu gweithredu. Mae Tîm Arwain yr ysgol yn cyfarfod o leiaf unwaith yr wythnos er mwyn dadansoddi anghenion yr ysgol. Maent yn dadansoddi data cenedlaethol a lleol er mwyn sicrhau fod yr ysgol yn ateb anghenion pob disgybl. Mae'r athrawon yn cyfarfod yn wythnosol ar gyfer cynllunio, hyfforddiant a gosod trywydd pendant i welliannau'r ysgol.

Action taken following the review of school strategies

The school's governing body meets in full every term to ensure that the school's self-evaluation processes and school development plan are being implemented. The school's Leadership Team meets weekly to analyse the school's various needs. They study national and local data to ensure that the school satisfies all of the pupils' needs. The teachers meet weekly to plan, train and to focus on the school's improvement plans.

Clybiau allgyrsiol

Yn ystod y flwyddyn rydym wedi cynnal y clybiau ar ôl ysgol canlynol:

Clwb garddio, clwb cyfrifiaduron, clwb chwaraeon, clwb celf, Clwb Lladin a'r Urdd. Hoffwn ddiolch i bawb a gynorthwyodd gyda'r clybiau yma.

Extra-curricular clubs

During the year we have held the following clubs:

Gardening club, computer club, sports club, art club, the Latin Club and the Urdd. We would like to thank everyone who has helped with these clubs.

Newidiadau i brospectws yr Ysgol.

Mae prospectws yr ysgol wedi'i adolygu ac ar gael ar wefan yr ysgol, mae copiau ar gael o'r ysgol.

Changes to the school prospectus.

The school prospectus has been reviewed and updated and is available on the school website. Paper copies are available from the school.

Bwyta'n iach

Er mwyn hyrwyddo bwyta'n iach mae'r ysgol wedi ymgymryd â nifer o weithgareddau yn ystod y flwyddyn. Ymysg rhain mae hyrwyddo bwyd iach amser cinio a pheccynnau bwyd iach. Enillodd gegin yr Ysgol Uwchradd wobwr am ansawdd ei gwasanaeth. Lluniodd yr ysgol bolisi bwyta'n iach newydd y llynedd.

Healthy Eating

So as to promote healthy eating at the school we have participated in many activities during the year. Amongst these is the promotion of a healthy lunchtime menu and healthy packed lunches. The Secondary School kitchen recently won an award for the quality of its provision. The school drafted a new healthy eating policy last year.

Cysylltiadau â'r Gymuned

Roedd y Llywodraethwyr yn fodlon iawn â pharhad, datblygiad a'r cysylltiadau sylweddol rhwng yr ysgol a'r gymuned. Mae rhifyn newyddion yr ysgol Llais Pedr yn ymddangos yn rheolaidd ac yn gyswilt uniongyrchol rhwng yr ysgol, rhieni/gofalwyr a'r gymuned ehangach. Ceir adroddiadau cyson a manwl am ddigwyddiadau a llwyddiannau'r ysgol yn y papurau lleol ac yn y papur bro Clonc. Mae llawer o wybodaeth yn cael ei gynnwys ar wefan yr ysgol yn ogystal. Ar wahan i hyn, cafwyd enghreifftiau eraill o'r cysylltiad cryf â'r gymuned:-

1. Codi arian sylweddol tuag at achosion da o bob math - Plant Mewn Angen, Cymorth Cristnogol, UNICEF, Operation Christmas Child, Cancr y Fron - Cymru, Race for Life/Teenage Cancer Trust, Comic Relief, Ymchwil i Gancr, Ty Hafan, Dash, apêl Cystic Fibrosis, apel Marie Curie, Dolen Cymru Lesotho, Jeans for Genes a Bopath.
2. Amryw o gysylltiadau â'r ysgolion cynradd a Choleg Prifysgol y Drindod Dewi Sant (yn enwedig y rhaglen cyfoethogi'r cwricwlwm) a Choleg Prifysgol Aberystwyth; Mudiad Ysgolion Meithrin a'r Adran Confucius,
3. Cysylltiadau Addysg/Diwydiant, gan gynnwys Profiad Gwaith a "Palmantu'r Ffordd" (pan wahoddir aelodau o fyd busnes i'r ysgol ac fe ddanfonir disgyblion allan i ymweld

chwmniau]. Eleni cynhaliwyd cynhadledd gyrfaoedd pan y gwahoddwyd ystod eang o bartner-iaid busnes i'r ysgol,

4. Cydweithio â'r Heddlu ac asiantaethau eraill ar gynlluniau bugeiliol.
5. Sefydlu Fforwm Rhieni yn yr ysgol
6. Cysylltiadau â sefydliadau a chymdeithasau gan gynnwys ymweliadau ar gyfer bwriadau addysgol a chymdeithasol e.e., Ymddiriedolaeth Natur Gorllewin Cymru, Y Lleng Brydeinig, Prifysgol Cymru Aberystwyth a'r Drindod Dewi Sant, eglwysi a chapel lleol,
7. Gwahodd rhieni a ffrindiau i ymuno yng ngweithgareddau'r ysgol, yn bennaf drwy'r Gymdeithas Rhieni ac Athrawon sy'n cynnal gweithgareddau addysgol yn ogystal â chodi arian. Gwahoddir rhieni i achlysuron megis yr Eisteddfod a'r Mabolgampau.
8. Cymryd rhan mewn cystadlaethau, a thrwy wneud hynny'n llwyddiannus dod ag anrhydedd i'r gymuned gyfan e.e.
Jaguar FI Team Challenge Gwobr Dyfeisiadau Cymru i fyfyrwyr
Eisteddfod yr Urdd Siarad Cyhoeddus y Rotari
Siarad Cyhoeddus CEWC & OSU Gwobr Dug Caeredin
UK Maths Challenge Cystadleuaeth Beirianeg EESW
Chwaraeon amrywiol
Cyfrannu at Wyl Fwyd Llanbed & Cogydd Ifanc Gwyl Fwyd Llanbed
9. Cysylltiadau â'r gymuned ryngwladol drwy weithgareddau amrywiol - Ffrainc, Lesotho, Sweden.
10. O dan adain yr Adran Gerdd mae'r disgyblion wedi cymryd rhan mewn nifer o berfformiadau yn y gymuned. Mae'r rhain yn cynnwys perfformio mewn Cyngerdd a Gwasanaethau Cofio; diddanu'r henoed adeg y Nadolig a chystadlu mewn eisteddfodau lleol.

Mae'r llywodraethwyr yn gwerthfawrogi'r cyswllt clos a deinamig rhwng yr ysgol a'r gymuned ym mhob ystyr.

Links with the Community

The Governors are pleased with the continuation and development of the close and significant links between the school and the community.

The school newsletter Llais Pedr continues to appear regularly, and is a direct link between school and parents and the wider community. There are frequent and detailed reports regarding school events and successes in the local papers and in Clonc. Much information now appears on the revamped school web site.

Apart from this, there were many other examples of strong links with the community:-

1. Raising substantial sums of money for good causes of all kinds - Children in Need, Christian Aid, UNICEF, Operation Christmas Child, S4CAppeal, Comic Relief, Cancer Research, TV Hafan, Cystic Fibrosis, Breast Cancer Wales, Habitat for Humanity, Race for Life, Dash, Teenage Cancer Trust and the Marie Curie Appeal, Dolen Cymru Lesotho, Bobath Children's Therapy Centre.
2. Various links with primary schools and the Universities of Trinity and St. David's at Lampeter (especially the Year 12/13 Curriculum Enrichment Programme) and Aberystwyth,
3. Education/Industry links, including Work Experience and "Paving the Way" (when local business people are invited to school and pupils are sent out to visit businesses).
4. Obtaining sponsorship from local people for all kinds of different activities.
5. Co-operating with the Police and other agencies on a pastoral programme.
6. Establishing a Parents' Forum in the school,
7. Links with various organisations and bodies, including visits of an educational and social purpose e.g., West Wales Nature Trusts, Universities of Trinity and St. David's at Lampeter and Aberystwyth, British Legion, churches and chapels

8. *Contacts with the international community as a result of various activities - France, Lesotho and Sweden.*
9. *Under the auspices of the Music Department, pupils participated in numerous performances in the community. These included senior pupils performing in a Concert and Remembrance service and entertaining the elderly at Christmas and participating in local eisteddfodau*

Additionally

Organisation of concerts, Prize Evening, contributing to radio and television programmes etc Inviting parents and friends to join in certain school activities, mostly through the PTA which holds educational events as well as raising money. Parents are invited to events such as the school Eisteddfod and Sports. Inviting individuals and groups to address educate and train pupils. Taking part in competitions and, by doing so successfully, bringing recognition to the community as well as the school e.g.

The Governors appreciate the close and dynamic links between the school and community in all their various spheres.

Jaguar FI Team Challenge

Urdd Eisteddfod

CEWC & OSU Public Speaking

Rotary's Youth Speaks

Young Cook of the year competition

UK Maths Challenge

EESW Engineering competition Various sports competitions

Welsh Student Innovations Prize

Salter's Chemistry festival

Lampeter Food Festival

Duke of Edinburgh Award Scheme

Lampeter in Bloom

Local Eisteddfodau

**Bro Pedr
5500**

£

<u>CYFLAWNIAD ARIANNOL 2015/16</u>		<u>FINANCIAL PERFORMANCE 2015/16</u>
Mae'r Awdurdod Addysg Lleol newydd gau'r cyfrifon am y flwyddyn ariannol a ddaeth i ben ar 31 Mawrth 2016. Dangosir isod sut y daethpwyd at y cyllid a benodwyd i'r ysgol.		The Local Education Authority has recently finalised the closure of accounts for the year ended 31 March 2016. The total funding for the school has been derived as set out below.
Dyraniad Cyllid Gwreiddiol yn ôl Fformiwla	5,305,388	Formula Funding Initial Allocation
Newid yn Niferoedd Disgyblion	0	Change in Pupil Numbers
AAA	(37,761)	SEN
Arwynebedd	0	Floor Area
Y Dreth Annomestig	(13,459)	National Non-Domestic Rates
PFI	0	PFI
Addasiad Arall	20,729	Other Adjustment
Dyraniad y Gronfa wrth Gefn heb ei Defnyddio	15,388	Allocation of Unutilised Contingency
Dyraniad Cyllid Diwygiedig 2015/16 yn ôl Fformiwla	5,290,285	Revised 2015/16 Formula Funding Allocation
Gwariant Net	5,348,951	Net Expenditure
Amrywiant	(58,666)	Variance
Llog ar y Gweddillion	0	Interest on Balances
Gwarged / (Diffyg) - 1 Ebrill 2015	(167,115)	Surplus / (Deficit) - 1 April 2015
Gwarged / (Diffyg) - 31 Mawrth 2016	(225,781)	Surplus / (Deficit) - 31 March 2016

**CYNLLUN GWELLA YSGOL BRO PEDR 2016/17:
Y PRIF FLAENORIAETHAU, 3-19**

**BRO PEDR'S SCHOOL IMPROVEMENT PLAN 2016/17:
THE MAIN PRIORITIES, 3-19**

1. Cynyddu cyflawniad a chynnydd disgyblion: codi safonau addysgu a dysgu
Increase pupils' achievement and progress: raise teaching and learning standards
2. Datblygu ethos cynhwysol ac uchelgeisiol Ysgol Gyfan
Develop an inclusive and ambitious Whole School ethos
3. Gwella Presenoldeb disgyblion
Improve pupils' Attendance
4. Datblygu'r ddarpariaeth Llythrennedd
Improve Literacy provision
5. Datblygu'r ddarpariaeth Rhifedd
Improve Numeracy provision
6. Lleihau effaith rhwystrau ar gynnydd disgyblion
Minimising the effect of barriers to achievement
7. Datblygu'r ddarpariaeth ar gyfer disgyblion mwy abl a thalentog
Develop the provision for more able and talented pupils
8. Cryfhau Atebolrwydd Rheolwyr ar bob lefel er mwyn codi safonau
Strengthen Managers' Accountability on all levels in order to raise standards
9. Gwneud defnydd diogel a chynyddol effeithiol o adnoddau
Make safe and increasingly effective use of resources

CANLYNIADAU

2016

~

2016

RESULTS

CANLYNIADAU / RESULTS

Crynodeb o berfformiad yr Ysgol Summary of the school's performance

Cyfnod Allweddol / Key Stage	Cym Teulu Family Comp 2016	Cym Cymru Wales Comp 2016	Chwarterl Quartile			Tuedd Trend x3
			2014	2015	2016	
Cyfnod Sylfaen / Foundation Stage			2014	2015	2016	
Dangosydd y CS / FS Indicator (DCS/FPI)	↑	↑	2 ↑	2 →	2 →	→
Sgiliau Saesneg / English Skills (D5+ / O5+)	→	↑	2 ↑	3 ↓	3 →	→
Sgiliau Saesneg / English Skills (D6+/O6+)	→	↓	3 ↓	3 →	3 →	→
Sgiliau Cymraeg / Welsh Skills (D5+/O5+)	↓	↑	3 ↓	2 ↑	3 ↓	↓
Sgiliau Cymraeg / Welsh Skills (D6+/O6+)	↓	↓	2 →	2 →	3 ↓	→
Maths (D5+/O5+)	↑	↑	2 ↑	2 →	1 ↑	↑
Maths (D6+/O6+)	↓	↓	3 ↓	3 →	3 →	→
ABCh/PSE (D5+/O5+)	↑	↑	3 ↓	3 →	1 ↑	→
ABCh/PSE (D6+/O6+)	↑	↑	1 ↑	3 ↓	1 ↑	↑
Cyfnod Allweddol 2 / Key Stage 2			2014	2015	2016	
Dangosydd Pwnc Craidd/Core Subject Indicator	↓	↑	4 ↓	3 ↑	3 →	→
Saesneg / English L4+	↑	↓	4 ↓	3 ↑	3 →	→
Saesneg / English L5+	↓	↓	2 ↑	3 →	4 ↓	↓
Cymraeg / Welsh L4+	→	↑	2 ↑	2 →	3 ↓	↓
Cymraeg/Welsh L5+	↓	↓	2 ↑	3 →	3 →	→
Maths L4+	↓	↑	4 ↓	2 ↑	4 ↓	↓
Maths L5+	↑	↑	2 ↑	2 →	3 ↓	↓
Gwydd./Science L4+	↓	↑	4 ↓	2 ↑	3 ↓	↓
Gwydd./Science L5+	↓	↓	3 ↑	3 →	3 →	→
Cyfnod Allweddol 3 / Key Stage 3			2014	2015	2016	
Dangosydd Pwnc Craidd/Core Subject Indicator	↓	↑	1 ↓	2 ↓	3 ↓	↓
Saesneg/English L5+	↓	↑	2 ↓	3 ↓	4 ↓	↓
Saes./English L6+	↑	↑	1 ↑	2 ↓	3 →	→
Cym./Welsh L5+	↓	↓	4 ↑	3 →	3 →	→
Cym./Welsh L6+	↓	↓	2 ↑	2 →	4 ↓	→
Maths L5+	↑	↑	1 ↑	1 ↑	2 ↓	↑
Maths L6+	↑	↑	1 ↑	3 ↓	2 ↑	↑
Gwydd./Science L5+	↓	↑	1 ↑	3 ↓	4 ↓	↓
Gwydd./Science L6+	↓	↓	3 ↑	2 ↑	4 ↓	↑

CANLYNIADAU / RESULTS

CYFNOD SYLFAEN / FOUNDATION PHASE

Blwyddyn 2 = 52 o ddisgyblion

Year 2 = 52 pupils

Cyfnod Sylfaen / Foundation Phase													
Deilliannau / Outcomes													
Niferoedd disgyblion / Number of pupils													
N D W I 2 3 4 5 6 A													
Testun												Subject	
Datblygiad personol a chymdeithasol, lles ac amrywiaeth ddiwylliannol	Ysgol	0	0	0	0	0	0	0	8	44	0	School	Personal and social development, wellbeing and cultural diversity
Sgiliau iaith, llythrennedd a chyfathrebu (yn y Gymraeg)	Ysgol	0	0	0	0	0	0	2	16	8	0	School	Language, literacy and communication skills (in Welsh)
Sgiliau iaith, llythrennedd a chyfathrebu (yn y Saesneg)	Ysgol	0	0	0	0	0	0	2	15	9	0	School	Language, literacy and communication skills (in English)
Datblygiad Mathemategol	Ysgol	0	0	0	0	0	0	1	33	18	0	School	Mathematical development
DCS	Ysgol											School	FPI
	48											48	

CANLYNIADAU / RESULTS

CYFNOD SYLFAEN / FOUNDATION PHASE

Blwyddyn 2 = 52 o ddisgyblion

Year 2 = 52 pupils

Cyfnod Sylfaen / Foundation Phase													
Deiliannau / Outcomes													
Canrannau / Percentages													
		N	D	W	I	2	3	4	5	6	A		
Testun												Subject	
Datblygiad personol a chymdeithasol, lles ac amrywiaeth ddiwylliannol	Ysgol	0	0	0	0	0	0	0	15.4	84.6	0.0	School	Personal and social development, wellbeing and cultural diversity
	Cymru	0.1	0.3	0.2	0.2	0.4	0.8	3.1	38.8	55.8	0.2	Wales	
Sgiliau iaith, llythrennedd a chyfathrebu (yn y Gymraeg)	Ysgol	0	0	0	0	0	0	7.7	61.5	30.8	0	School	Language, literacy and communication skills (in Welsh)
	Cymru	-	0.1	-	0.1	0.2	0.9	7.3	54.5	36.8	0.1	Wales	
Sgiliau iaith, llythrennedd a chyfathrebu (yn y Saesneg)	Ysgol	0	0	0	0	0	0	7.7	57.7	34.6	0	School	Language, literacy and communication skills (in English)
	Cymru	0.1	0.4	0.3	0.3	0.5	1.6	8.9	53.7	34.0	0.2	Wales	
Datblygiad Mathemategol	Ysgol	0	0	0	0	0	0	1.9	63.5	34.6	0	School	Mathematical development
	Cymru	0.1	0.3	0.2	0.2	0.4	1.2	7.9	55.4	34.1	0.2	Wales	
DCS	Ysgol	92.3										School	FPI
	Cymru	86.8										Wales	

CANLYNIADAU / RESULTS

CYFNOD ALLWEDDOL 2 / KEY STAGE 2

Blwyddyn 6 = 49 o ddisgyblion

Year 6 = 49 pupils

Cyfnod Allweddol 2 / Key Stage 2											
Lefelau / Levels											
Niferoedd disgyblion / Number of pupils											
N D 1 2 3 4 5 6+											
Testun											Subject
Cymraeg Iaith Gyntaf	Ysgol	0	0	0	1	1	15	6	0	School	Welsh First Language
	Llafaredd	0	0	0	1	1	15	6	0	School	
Darllen	Ysgol	0	0	0	1	5	11	6	0	School	Reading
	Llafaredd	0	0	0	2	1	30	16	0	School	
Ysgrifennu	Ysgol	0	0	0	1	1	15	6	0	School	Writing
	Llafaredd	0	0	0	2	1	30	16	0	School	
Saesneg	Ysgol	0	0	0	2	1	30	16	0	School	English
	Llafaredd	0	0	0	2	6	25	16	0	School	
Darllen	Ysgol	0	0	0	2	2	33	12	0	School	Writing
	Llafaredd	0	0	0	2	2	33	12	0	School	
Mathemateg	Ysgol	0	0	0	1	3	23	22	0	School	Mathematics
	Llafaredd	0	0	0	3	0	28	18	0	School	
Gwyddoniaeth	Ysgol	0	0	0	3	0	28	18	0	School	Science
	Llafaredd	0	0	0	3	0	28	18	0	School	
DCS	Ysgol									School	FPI
	45									45	

CANLYNIADAU / RESULTS

CYFNOD ALLWEDDOL 2 / KEY STAGE 2

Blwyddyn 6 = 49 o ddisgyblion

Year 6 = 49 pupils

Cyfnod Allweddol 2 / Key Stage 2												
Lefelau / Levels												
Canrannau / Percentages												
		N	D	1	2	3	4	5	6+	4+		
Testun											Subject	
Cymraeg Iaith Gyntaf	Ysgol	0	0	0	4.3	4.3	65.2	26.1	0	91.3	School	Welsh First Language
	Cymru	-	0.2	0.4	1.5	7.4	52.5	36.8	1.2	90.5	Wales	
Llafaredd	Ysgol	0	0	0	4.3	4.3	65.2	26.1	0	91.3	School	Oracy
	Cymru	-	0.2	0.4	0.9	6.6	50.6	39.9	1.3	91.8	Wales	
Darllen	Ysgol	0	0	0	4.3	21.7	47.8	26.1	0	73.9	School	Reading
	Cymru	-	0.2	0.4	1.5	8.1	50.2	38.2	1.3	89.8	Wales	
Ysgrifennu	Ysgol	0	0	0	4.3	4.3	65.2	26.1	0	91.3	School	Writing
	Cymru	-	0.2	0.4	1.8	12.8	55.6	28.1	1.0	84.7	Wales	
Saesneg	Ysgol	0	0	0	4.1	2.0	61.2	32.7	0	93.9	School	English
	Cymru	0.1	0.3	0.5	1.8	7.4	48.8	39.4	1.4	89.6	Wales	
Llafaredd	Ysgol	0	0	0	4.1	2.0	61.2	32.7	0	93.9	School	Oracy
	Cymru	0.2	0.3	0.4	1.6	7.2	47.5	41.0	1.5	90.0	Wales	
Darllen	Ysgol	0	0	0	4.1	12.2	51.0	32.7	0	83.7	School	Reading
	Cymru	0.1	0.3	0.5	1.7	8.1	46.7	40.3	1.9	88.9	Wales	
Ysgrifennu	Ysgol	0	0	0	4.1	4.1	67.3	24.5	0	91.8	School	Writing
	Cymru	0.2	0.3	0.6	2.2	12.1	51.4	31.6	1.4	84.3	Wales	
Mathemateg	Ysgol	0	0	0	2.0	6.1	46.9	44.9	0	91.8	School	Mathematics
	Cymru	0.1	0.3	0.4	1.5	7.1	49.0	39.9	1.4	90.2	Wales	
Gwyddoniaeth	Ysgol	0	0	0	6.1	0	57.1	36.7	0	93.9	School	Science
	Cymru	0.1	0.3	0.5	1.4	6.0	50.2	40.9	0.2	91.4	Wales	
DCS	Ysgol	91.8									School	FPI
	Cymru	87.7									Wales	

CANLYNIADAU / RESULTS

CYFNOD ALLWEDDOL 3 / KEY STAGE 3

Blwyddyn 9 = 111 o ddisgyblion

Year 9 = 111 pupils

Cyfnod Allweddol 3 / Key Stage 3													
Pynciau Craidd / Core Subjects													
Lefelau / Levels													
Canrannau / Percentages													
		D	1	2	3	4	5	6	7	8	5+		
Testun												Subject	
Cymraeg Iaith Gyntaf	Ysgol	1.4	0	0	1.4	5.8	49.3	20.3	17.4	4.3	91.3	School	Welsh First Language
	Cymru	-	0.2	0.2	0.7	7.9	34.8	38.8	15.8	1.5	90.9	Wales	
Llafaredd	Ysgol	1.4	0	0	4.3	4.3	40.6	27.5	18.8	2.9	89.9	School	Oracy
	Cymru	-	0.2	0.2	0.6	7.7	31.9	39.4	17.7	2.1	91.2	Wales	
Darllen	Ysgol	1.4	0	0	0	7.2	46.4	21.7	21.7	1.4	91.3	School	Reading
	Cymru	-	0.2	0.2	0.9	9.1	34.5	37.5	15.9	1.5	89.5	Wales	
Ysgrifennu	Ysgol	1.4	0	0	1.4	8.7	49.3	21.7	13.0	4.3	88.4	School	Writing
	Cymru	-	0.2	0.3	1.5	13.8	38.0	34.2	10.7	1.2	84.1	Wales	
Saesneg	Ysgol	3.6	0	0	0.9	6.3	30.6	27.9	21.6	9.0	89.2	School	English
	Cymru	0.1	0.3	0.7	2.2	8.2	35.3	36.0	15.3	1.3	87.9	Wales	
Llafaredd	Ysgol	3.6	0	0	0.0	5.4	32.4	29.7	19.8	9.0	91.0	School	Oracy
	Cymru	0.1	0.3	0.6	2.0	8.3	33.9	36.8	15.6	1.7	88.0	Wales	
Darllen	Ysgol	3.6	0	0	0.9	8.1	27.0	29.7	21.6	9.0	87.4	School	Reading
	Cymru	0.1	0.3	0.7	2.5	9.5	34.8	35.0	15.2	1.4	86.4	Wales	
Ysgrifennu	Ysgol	3.6	0	0	1.8	12.6	30.6	22.5	19.8	9.0	82.0	School	Writing
	Cymru	0.1	0.3	0.8	2.7	14.4	37.1	31.2	11.6	1.2	81.0	Wales	
Mathemateg	Ysgol	3.6	0	0	0.9	2.7	21.6	36.0	35.1	0.0	92.8	School	Mathematics
	Cymru	0.1	0.3	0.6	2.0	7.9	29.1	33.2	22.9	3.4	88.7	Wales	
Gwyddoniaeth	Ysgol	3.6	0	0	0.0	4.5	36.0	32.4	17.1	6.3	91.9	School	Science
	Cymru	0.2	0.3	0.4	1.0	5.8	33.2	37.9	19.3	1.2	91.8	Wales	
DCS	Ysgol	87.4										School	FPI
	Cymru	83.9										Wales	

CANLYNIADAU / RESULTS

CYFNOD ALLWEDDOL 3 / KEY STAGE 3

Blwyddyn 9 = 111 o ddisgyblion

Year 9 = 111 pupils

Cyfnod Allweddol 3 / Key Stage 3 Pynciau Craidd / Core Subjects													
Lefelau / Levels													
Niferoedd disgyblion / Number of pupils													
D 1 2 3 4 5 6 7 8 5+													
Testun													Subject
Cymraeg Iaith Gyntaf	Ysgol	1	0	0	1	4	34	14	12	3	63	School	Welsh First Language
	Llafaredd	1	0	0	3	3	28	19	13	2	62	School	Oracy
Darllen	Ysgol	1	0	0	0	5	32	15	15	1	63	School	Reading
	Ysgrifennu	1	0	0	1	6	34	15	9	3	61	School	Writing
Saesneg	Ysgol	4	0	0	1	7	34	31	24	10	99	School	English
	Llafaredd	4	0	0	0	6	36	33	22	10	101	School	Oracy
Darllen	Ysgol	4	0	0	1	9	30	33	24	10	97	School	Reading
	Ysgrifennu	4	0	0	2	14	34	25	22	10	91	School	Writing
Mathemateg	Ysgol	4	0	0	1	3	24	40	39	0	103	School	Mathematics
Gwyddoniaeth	Ysgol	4	0	0	0	5	40	36	19	7	102	School	Science
DCS	Ysgol	97										School	FPI
												97	

CANLYNIADAU / RESULTS

CYFNOD ALLWEDDOL 3 / KEY STAGE 3

Blwyddyn 9 = 111 o ddisgyblion

Year 9 = 111 pupils

Cyfnod Allweddol 3 / Key Stage 3 Pynciau Di-Graidd / Non-Core Subjects													
Lefelau / Levels													
Canrannau / Percentages													
		D	1	2	3	4	5	6	7	8	5+		
Testun													Subject
Cymraeg Ail laith	Ysgol	19.0	0	0	0	19.0	26.2	23.8	11.9	0	61.9	School	Welsh Second Language
	Cymru	1.4	0.5	0.7	3.1	11.7	38.1	30.8	11.4	0.8	81.2	Wales	
Ffrangeg	Ysgol	9.0	0	0	0	1.8	18.9	45.0	25.2	0	89.2	School	French
	Cymru	1.5	0.4	0.6	2.4	9.2	34.4	34.5	14.6	0.5	84.1	Wales	
Dylunio a Thechnoleg	Ysgol	5.4	0	0	0	1.8	25.2	42.3	18.9	6.3	92.8	School	Design and Technology
	Cymru	0.2	0.2	0.3	0.7	5.6	37.3	40.9	13.3	0.6	92.1	Wales	
TGCh	Ysgol	4.5	0	0	0	1.8	33.3	47.7	12.6	0	93.7	School	ICT
	Cymru	0.2	0.2	0.4	0.8	5.0	33.1	42.2	16.9	0.5	92.7	Wales	
Hanes	Ysgol	5.4	0	0	0	5.4	25.2	26.1	27.9	9.9	89.2	School	History
	Cymru	0.2	0.2	0.4	1.2	7.5	34.4	36.4	17.4	1.4	89.6	Wales	
Daearyddiaeth	Ysgol	5.4	0	0	0	6.3	30.6	28.8	25.2	3.6	88.3	School	Geography
	Cymru	0.2	0.2	0.4	1.2	7.2	34.5	36.2	17.2	1.9	89.9	Wales	
Celf a Dylunio	Ysgol	3.6	0	0	0	1.8	32.4	35.1	20.7	4.5	94.6	School	Art and Design
	Cymru	0.2	0.2	0.4	0.6	5.8	37.2	37.8	15.2	1.7	92.0	Wales	
Cerddoriaeth	Ysgol	5.4	0	0	0	3.6	36.0	45.9	8.1	0.9	91.0	School	Music
	Cymru	0.3	0.2	0.3	0.5	5.9	43.5	36.2	10.1	1.6	91.6	Wales	
Addysg Gorfforol	Ysgol	3.6	0	0	0	2.7	34.2	42.3	16.2	0.9	93.7	School	PE
	Cymru	0.4	0.2	0.3	0.7	6.1	44.4	34.1	11.6	1.3	91.4	Wales	

CANLYNIADAU / RESULTS

CYFNOD ALLWEDDOL 3 / KEY STAGE 3

Blwyddyn 9 = 111 o ddisgyblion

Year 9 = 111 pupils

Cyfnod Allweddol 3 / Key Stage 3 Pynciau Di-Graidd / Non-Core Subjects													
Lefelau / Levels													
Niferoedd disgyblion / Number of pupils													
		D	1	2	3	4	5	6	7	8	5+		
Testun												Subject	
Cymraeg Ail iaith	Ysgol	8	0	0	0	8	11	10	5	0	26	School	Welsh Second Language
Ffrangeg	Ysgol	10	0	0	0	2	21	50	28	0	99	School	French
Dylunio a Thechnoleg	Ysgol	6	0	0	0	2	28	47	21	7	103	School	Design and Technology
TGCh	Ysgol	5	0	0	0	2	37	53	14	0	104	School	ICT
Hanes	Ysgol	6	0	0	0	6	28	29	31	11	99	School	History
Daearyddiaeth	Ysgol	6	0	0	0	7	34	32	28	4	98	School	Geography
Celf a Dylunio	Ysgol	4	0	0	0	2	36	39	23	5	103	School	Art and Design
Cerddoriaeth	Ysgol	6	0	0	0	4	40	51	9	1	101	School	Music
Addysg Gorfforol	Ysgol	4	0	0	0	3	38	47	18	1	104	School	PE

CANLYNIADAU / RESULTS

Blwyddyn 11 = 115 o ddisgyblion

Year 11 = 115 students

TGAU neu Cymhwyster Lefel 2 GCSE or Level 2 Qualification									
Graddau / Grades									
	A*	A	B	C	D	E	F	G	
Testun	Subject								
Addysg Gorfforol	2	6	15	6	2	0	0	0	Physical Education
Addysg Grefyddol	1	1	0	0	0	0	0	0	Religious Education
Astudiaethau Cyfrifiadur	0	1	3	4	1	2	0	0	Computer Studies
Bioleg	1	5	11	10	2	0	0	0	Biology
Busnes	0	3	9	8	0	0	0	0	Business
Celf	3	7	4	2	0	0	0	0	Art
Cemeg	2	7	7	10	3	0	0	0	Chemistry
Cerdd	2	2	4	0	1	0	0	0	Music
Cymraeg Iaith Gyntaf	4	8	18	26	11	1	0	0	Welsh First Language
Cymraeg Llên	7	10	25	12	6	4	0	0	Welsh Literature
Cymraeg Ail Iaith	7	10	6	0	0	0	0	0	Welsh Second Language
Daearyddiaeth	6	9	12	2	3	0	0	0	Geography
Dylunio & Thechnoleg	9	12	7	1	0	1	0	0	Design & Technology
Ffiseg	4	7	7	8	2	0	0	0	Physics
Ffrangeg	1	0	2	2	0	0	0	0	French
Graffeg - Celf	1	2	0	2	0	0	0	0	Graphics - Art
Gwyddoniaeth A	0	1	10	36	6	1	0	0	Science A
Gwyddoniaeth Ychwanegol	0	2	7	24	12	7	2	0	Additional Science
Hanes	1	7	9	15	5	2	0	0	History
Iaith Fodern Ychwanegol	1	1	1	1	0	0	0	0	Other MFL
Iechyd & Gofal Cymdeithasol	0	3	4	6	0	0	0	0	Health & Social Care
Mathemateg	6	15	17	55	8	7	2	0	Mathematics
Saesneg Iaith	1	20	19	37	25	4	2	0	English Language
Saesneg Llên	2	22	30	19	6	0	0	0	English Literature
Technoleg Gwybodaeth	0	4	23	30	23	2	0	0	IT

1/2 TGAU / 1/2 GCSE									
Graddau / Grades									
	A*	A	B	C	D	E	F	G	
Testun	Subject								
Astudiaethau Crefyddol	0	2	3	9	1	0	0	0	Religious Studies
Technoleg Gwybodaeth	0	0	1	2	2	0	0	0	Information Technology

CANLYNIADAU / RESULTS

Blwyddyn 11 = 115 o ddisgyblion

Year 11 = 115 students

Canlyniadau Lefel 2				Level 2 Results
Graddau / Grades				
	D	M	P	
Mathemateg Ychwanegol	2	3		Additional Mathematics

Canlyniadau CCG Lefel 2		NVQ Level 2 Results
CGC Lefel 2 = 3 TGAU Gradd B		NVQ 2 = 3 GCSE Grade B
Peirianeg	36	Engineering

Canlyniadau BTEC Lefel 2				Level 2 BTEC Results
Graddau / Grades				
	D	M	P	
Adeiladwaith	2	6	2	Construction
Gwyddoniaeth	0	0	25	Science

Canlyniadau Lefel 2		Level 2 Results
Lefel 2 = 2 TGAU Gradd B		Level 2 = 2 GCSE Grade B
Trin Gwallt	4	Hairdressing

Canlyniadau Lefel 2 CACHE Gofal Plant				CACHE Level 2 Results Child Care	
Lefel 2 = 3 TGAU				Level 2 = 3 GCSE	
Graddau / Grades					
	A*	A	B	C	
Gofal Plant ac Addysg	2	3	2	11	Child Care and Education

Canlyniadau Llwybrau Mynediad				Entry Pathway Results
Graddau / Grades				
	1	2	3	
Mathemateg	0	3	2	Mathematics
Saesneg	0	6	0	English

CANLYNIADAU / RESULTS

Lefel A 2016 A Level

Blwyddyn 13 / Year 13 = 69 o ddisgyblion / students

Lefel A neu Cymhwyster Lefel 3 A level or Level 3 Qualification								
Graddau / Grades								
	A*	A	B	C	D	E	U	
Testun	Subject							
Addysg Gorfforol	0	0	1	2	0	0	0	Physical Education
Astudiaethau Crefyddol	0	1	1	3	0	0	0	Religious Studies
Celf	0	1	3	2	3	1	0	Art
Bioleg	0	1	3	3	1	1	1	Biology
Busnes	1	2	4	2	0	0	0	Business
Cemeg	0	1	3	4	0	1	0	Chemistry
Cerdd	0	1	0	1	2	1	0	Music
Cymraeg	0	1	5	0	0	0	0	Welsh
Daearyddiaeth	1	4	1	3	0	0	0	Geography
Drama	0	0	0	1	1	0	0	Drama
Dylunio & Thechnoleg	0	4	0	1	1	1	0	Design & Technology
Ffiseg	0	2	1	2	1	0	0	Physics
Ffrangeg	0	0	1	0	2	0	0	French
Y Fagloraeth Cymreig	10	24	10	19	0	0	0	Child Care - Diploma
Gofal Plant - Tystysgrif	0	0	1	2	2	2	0	Child Care - Certificate
Cymdeithaseg	0	1	1	2	2	0	1	Sociology
Hanes	0	2	4	2	0	0	0	History
Iechyd & Gofal Cymdeithasol	0	0	5	1	2	0	0	Health & Social Care
Mathemateg	3	2	5	2	0	0	0	Mathematics
Mathemateg Bellach	3	1	0	0	0	0	0	Further Mathematics
Iaith Fodern Ychwanegol	1	0	1	1	0	0	0	Additional Modern Language
Saesneg Iaith	0	1	6	1	1	0	0	English Lang.
Saesneg Llên	2	1	0	2	0	0	0	English Lit.
Technoleg Gwybodaeth	0	0	0	0	0	4	0	IT
Teithio & Thwristiaeth	0	2	3	0	4	0	0	Travel & Tourism

Canlyniadau BTEC Lefel 3	Level 3 BTEC Results			
Graddau / Grades				
	D	M	P	
Techoleg Cerdd	0	1	2	Music Technology
Gwasanaethau Cyhoeddus	2	2	11	Public Services

Canlyniadau CCG Lefel 3	NVQ Level 3 Results	
CGC3 = 367.5 pwynt (A* Lefel A = 300 Pwynt)	NVQ3 = 367.5 points (A Level A* = 300 points)	
Peirianeg	3	Engineering

CANLYNIADAU / RESULTS

Canlyniadau Lefel 3	Level 3 Results	
	P	
Gwallt a Harddwch	3	Hairdressing & Beauty

Lefel UG 2016 AS Level

Blwyddyn 13 / Year 13 = 69 o ddisgyblion / students

Lefel UG /AS Level								
Graddau / Grades								
	A*	A	B	C	D	E	U	
Testun	Subject							
Addysg Gorfforol	0	0	0	0	1	0	0	Physical Education
Astudiaethau Crefyddol	0	0	0	1	0	0	0	Religious Studies
Bioleg	0	0	0	2	0	0	0	Biology
Busnes	0	2	0	0	0	0	0	Business
Cymdeithaseg	0	0	0	1	0	1	0	Sociology
Cymraeg	0	1	0	0	0	0	0	Welsh
Ffiseg	0	0	0	2	0	0	0	Physics
Ffrangeg	0	0	0	0	1	0	0	French
Hanes	0	0	0	0	1	0	0	History
Pwyleg	0	1	0	0	0	0	0	Polish
Teithio & Thwristiaeth	0	0	0	1	1	0	0	Travel & Tourism

Llwybrau'r Disgyblion a Oedd Dros Oedran Gorfodol (Haf 2015)	Routes Taken By Pupils Over The Compulsory School Age (Summer 2015)			
	BI / Yr 11	BI / Yr 12	BI / Yr 13	
Parhau mewn addysg llawn amser ym Mhro Pedr	69	73	2	Continuing in full-time education in Bro Pedr
Parhau mewn addysg llawn amser mewn ysgol arall	3	1	0	Continuing in full-time education in another school
Parhau mewn addysg llawn amser mewn Coleg	24	11	4	Continuing in full-time education in a College
Parhau mewn addysg amser llawn mewn AU	0	0	45	Continuing in full-time education in HE
Blwyddyn mas	0	0	0	Gap Year
Parhau mewn addysg ran-amser	1	0	0	Continuing in part time education
Dechrau cyflogaeth tu allan i HSWBI	1	7	7	Entering employment outside WBTYP
Dechrau cyflogaeth tu allan i HSWBI (statws cyflogedig)	2	3	0	Entering WBTYP (employed status)
Dechrau cyflogaeth tu allan i HSWBI (heb statws cyflogedig)	3	0	0	Entering WBTYP (without employed status)
Yn gallu cael mynediad at Gyflogaeth, Addysg neu WBTYP (di-waith)	1	0	5	Able to Enter Emp, Ed or WBTYP (Unemployed)
Methu NEU DDIM YN BAROD i gael mynediad at Gyflogaeth, Addysg neu WBTYP (e.e. salwch, dedfryd o gaethiwed)	0	0	0	Unable OR NOT READY to enter Emp, Ed or WBTYP (e.g. due to illness, custodial sentence)
Yn hysbys iddynt adael yr adral	2	0	1	Known to have left the area
Dim ymateb i'r arolwg, felly'n anhysbys	1	0	1	Not responding to follow-up and therefore unknown
Cyfanswm y gadawyr ysgol statudol yn 2015	107	95	65	Total number of 2015 statutory school leavers

Ysgol Bro Pedr				SSSP 2015			
Crynodeb o Gyraeddiadau Ysgol (1)				Rhif ALI/Ysgol		667 / 5500	
Disgyblion 15 oed							
Nifer y disgyblion 15 oed a oedd ar y gofrestr yn Ionawr 2015 :				108			
Canran y disgyblion 15 oed a:							
	gofrestrodd am o leiaf un cymhw yster	enillodd drothw y Lefel 1	enillodd drothw y Lefel 2	enillodd drothw y Lefel 2 gan gynnwys TGAU mew n Saesneg neu Cymraeg iaith gyntaf a mathemateg	Dangosydd Pynciau Craidd (2)	Sgôr bw yntiau gyfartalog ehangach fesul disgybl w edii chapio (3)	Sgôr bw yntiau gyfartalog eang am bob disgybl
Ysgol 2014/15	100	96	92	67	65	359	491
Ardal ALI 2014/15	100	97	90	63	61	359	522
Cymru 2014/15	99	94	84	58	55	343	531
Ysgol 13/14/15	100	97	91	65	60	358	496
Ysgol 12/13/14	99	95	87	59	56	348	477
Nifer y bechgyn 15 oed a oedd ar y gofrestr yn Ionawr 2015 :				52			
Canran y bechgyn 15 oed a:							
	gofrestrodd am o leiaf un cymhw yster	enillodd drothw y Lefel 1	enillodd drothw y Lefel 2	enillodd drothw y Lefel 2 gan gynnwys TGAU mew n Saesneg neu Cymraeg iaith gyntaf a mathemateg	Dangosydd Pynciau Craidd (2)	Sgôr bw yntiau gyfartalog ehangach fesul disgybl w edii chapio (3)	Sgôr bw yntiau gyfartalog eang am bob disgybl
Ysgol 2014/15	100	96	87	65	65	353	481
Ardal ALI 2014/15	99	96	86	59	57	349	503
Cymru 2014/15	99	93	81	54	52	332	507
Ysgol 13/14/15	99	95	88	64	60	351	489
Ysgol 12/13/14	98	93	84	55	51	338	471
Nifer y merched 15 oed a oedd ar y gofrestr yn Ionawr 2015 :				56			
Canran y merched 15 oed a:							
	gofrestrodd am o leiaf un cymhw yster	enillodd drothw y Lefel 1	enillodd drothw y Lefel 2	enillodd drothw y Lefel 2 gan gynnwys TGAU mew n Saesneg neu Cymraeg iaith gyntaf a mathemateg	Dangosydd Pynciau Craidd (2)	Sgôr bw yntiau gyfartalog ehangach fesul disgybl w edii chapio (3)	Sgôr bw yntiau gyfartalog eang am bob disgybl
Ysgol 2014/15	100	96	96	68	64	365	500
Ardal ALI 2014/15	100	98	95	67	66	370	542
Cymru 2014/15	99	96	88	62	58	355	556
Ysgol 13/14/15	100	98	93	65	61	365	502
Ysgol 12/13/14	99	97	89	64	61	358	484
(1) I gael manylion ar gymhw ysterau sydd w edii'u cymeradw yo, sgôr pw yntiau a chyfraniad at y throthw y, gw eler y Gronfa Ddata Cymw ysterau Cymeradw y Cymru (DAQW) yn http://www.daqw.org.uk/							
(2) Mae manylion ynglŷn â pha feysydd llafur sydd ym mhob pw nc ar gael yn y nodiadau cyfarw yddy.							
(3) Cyfrifir y sgôr pw yntiau cyfartalog eang w edii gapio gan ddefnyddio'r 8 calnlyniad gorau.							
(4) Cymhw yster Lefel Mynediad.							
(5) Defnyddir ar gyfer holl dablau meincodi prydau am ddim.							
(6) Defnyddir ar gyfer holl dablau meincodi prydau am ddim. Dangosir y dangosydd yma dim ond am ysgollion uw chradd prif ffrw d.							
(7) Nodw ch mai enw adur y dangosydd yma yw'r disgyblion 15 oed a geisiodd arholiad Cymraeg iaith Gyntaf, yn hytrach na chyfansw m yr holl ddisgyblion 15 oed.							
.. Data ddim ar gael.							

Ysgol Bro Pedr						SSSP 2015			
Crynodeb o Gyraeddiadau Ysgol (1)						Rhif ALI/Ysgol		667 / 5500	
Disgyblion 15 oed									
Nifer y disgyblion 15 oed a oedd ar y gofrestr yn Ionawr 2015 : 108									
Canran y disgyblion 15 oed a:									
ennillodd A *-C mew n :						Pw yntiau cyfartalog fesul disgybl :			
	Saesneg/ Cymraeg	Saesneg	Cymraeg (6)	Mathemateg	Gw yddoniaeth	Saesneg/ Cymraeg	Mathemateg	Gw yddoniaeth	
Ysgol 2014/15	81	78	82	73	90	43	39	42	
Ardal ALI 2014/15	77	74	75	68	87	42	38	45	
Cymru 2014/15	70	69	75	64	84	39	37	48	
Ysgol 13/14/15	77	73	76	71	80	42	38	39	
Ysgol 12/13/14	73	69	78	65	73	40	37	38	
Nifer y bechgyn 15 oed a oedd ar y gofrestr yn Ionawr 2015 : 52									
Canran y bechgyn 15 oed a:									
ennillodd A *-C mew n :						Pw yntiau cyfartalog fesul disgybl :			
	Saesneg/ Cymraeg	Saesneg	Cymraeg (6)	Mathemateg	Gw yddoniaeth	Saesneg/ Cymraeg	Mathemateg	Gw yddoniaeth	
Ysgol 2014/15	77	71	77	75	88	43	40	43	
Ardal ALI 2014/15	68	63	66	67	84	40	38	43	
Cymru 2014/15	62	60	66	64	83	37	37	47	
Ysgol 13/14/15	72	66	64	73	78	39	39	39	
Ysgol 12/13/14	66	60	65	63	69	37	37	38	
Nifer y merched 15 oed a oedd ar y gofrestr yn Ionawr 2015 : 56									
Canran y merched 15 oed a:									
ennillodd A *-C mew n :						Pw yntiau cyfartalog fesul disgybl :			
	Saesneg/ Cymraeg	Saesneg	Cymraeg (6)	Mathemateg	Gw yddoniaeth	Saesneg/ Cymraeg	Mathemateg	Gw yddoniaeth	
Ysgol 2014/15	86	84	86	71	91	43	38	42	
Ardal ALI 2014/15	87	86	83	69	91	45	39	47	
Cymru 2014/15	78	77	84	64	85	42	37	49	
Ysgol 13/14/15	81	80	85	70	81	43	38	40	
Ysgol 12/13/14	80	79	88	68	76	43	37	39	
(1)	I gael manylion ar gymhw ysterau sydd wedi'u cymeradw yo, sgôr pw yntiau a chyfraniad at y throthw y Cymeradw y Cymru (DAQW) yn http://www.daqw.org.uk/								
(2)	Mae manylion ynglŷn â pha feysydd llafur sydd ym mhob pw nc ar gael yn y nodiadau cyfarw yddyd.								
(3)	Cyfrifir y sgôr pw yntiau cyfartalog eang wedi'i gapio gan ddefnyddio'r 8 calhyniad gorau.								
(4)	Cymhw yster Lefel Mynediad.								
(5)	Defnyddir ar gyfer holl dablau meincnodi prydau am ddim.								
(6)	Nodw ch mai enw adur y dangosydd yma yw 'r disgyblion 15 oed a geisiodd arholiad Cymraeg laith Gyntaf, yn hytrach na chyfansw m yr holl ddisgyblion 15 oed.								
..	Data ddim ar gael.								

Ysgol Bro Pedr				SSSP 2015			
Crynodeb o Gyraeddiadau Ysgol (1)				Rhif ALI/Ysgol		667 / 5500	
Disgyblion 15 oed							
		Canran y disgyblion 15 oed a:		Canran y bechgyn 15 oed a:		Canran y merched 15 oed a:	
	enillodd un CLM (4) neu ragor yn unig	heb ennill gymhw yster cydnabyddedig	enillodd un CLM (4) neu ragor yn unig	heb ennill gymhw yster cydnabyddedig	enillodd un CLM (4) neu ragor yn unig	heb ennill gymhw yster cydnabyddedig	
Ysgol 2014/15	0	0.0	0	0.0	0	0.0	
Ardal ALI 2014/15	0	0.4	0	0.5	0	0.3	
Cymru 2014/15	1	1.2	1	1.5	0	0.9	
Ysgol 13/14/15	1	0.3	0	0.6	1	0.0	
Ysgol 12/13/14	1	1.1	0	1.7	2	0.6	
Disgyblion 17 oed							
		Nifer y disgyblion 17 oed a oedd ar y gofrestr yn		Nifer y bechgyn 17 oed a oedd ar y gofrestr yn		Nifer y maerched 17 oed a oedd ar y gofrestr yn	
	Ionawr 2015: 63		Ionawr 2015: 20		Ionawr 2015: 43		
	Canran y disgyblion 17 oed a gofrestrodd am gyfaint o ddysgu yn gyfartal i 2 lefel A ac yn ennill y trothw y Lefel 3	Sgôr bw yntiau gyfartalog eang am bob disgybl 17 oed	Canran y disgyblion 17 oed a gofrestrodd am gyfaint o ddysgu yn gyfartal i 2 lefel A ac yn ennill y trothw y Lefel 3	Sgôr bw yntiau gyfartalog eang am bob disgybl 17 oed	Canran y disgyblion 17 oed a gofrestrodd am gyfaint o ddysgu yn gyfartal i 2 lefel A ac yn ennill y trothw y Lefel 3	Sgôr bw yntiau gyfartalog eang am bob disgybl 17 oed	
Ysgol 2014/15	100	910	100	810	100	957	
Ardal ALI 2014/15	99	914	98	861	100	952	
Cymru 2014/15	97	800	96	747	98	846	
Ysgol 13/14/15	100	733	100	640	100	787	
Ysgol 12/13/14	100	632	100	549	100	687	
<p>(1) I gael manylion ar gymhw ysterau sydd wedi'u cymeradwyo, sgôr pw yntiau a chyfraniad at y trothw y, gweler y Gronfa Ddata Cymw ysterau Cymeradw y Cymru (DAQW) yn http://www.daqw.org.uk/</p> <p>(2) Mae manylion ynglŷn â pha feysydd llafur sydd ym mhob pwnc ar gael yn y nodiadau cyfarwyddyd.</p> <p>(3) Cyfrifir y sgôr pw yntiau cyfartalog eang wedi'i gapio gan ddefnyddio'r 8 calnlyniad gorau.</p> <p>(4) Cymhw yster Lefel Mynediad.</p> <p>(5) Defnyddir ar gyfer holl dablau meincodi prydau am ddim. Dangosir y dangosydd yma dim ond am ysgolion uwchradd prifffwrdd.</p> <p>(6) Nodwch mai enwadur y dangosydd yma yw'r disgyblion 15 oed a geisiodd arholiad Cymraeg Iaith Gyntaf, yn hytrach na chyfanswm yr holl ddisgyblion 15 oed.</p> <p>.. Data ddim ar gael.</p>							

Ysgol Bro Pedr										SSSP 2015			
Math o Ysgol:										Rhif ALI/Ysgol		667 / 5500	
Iaith yr Ysgol:													
Nifer o Unedau AAA/Dosbarthiadau Arbennig 2015:										0			
Nifer y disgyblion ar y gofrestr ym mlwyddyn 11 2015:										107			
Canran y disgyblion o oedran ysgol gorfodol a hawl i gael prydau am ddim yn 13/14/15 ⁽⁵⁾ :										14.6			
Canran y disgyblion 15 oed ar y gorestr AAA 2015:										9.1			
Cynigir y Fagloriaeth Cymru: Yes													
Lefel o Fagloriaeth Cymru a gynigir:													
					Lefel uwch ar gyfer disgyblion ôl-16	Lefel canolradd ar gyfer disgyblion	Lefel sylfaen ar gyfer disgyblion ôl-16	Lefel canolradd ar gyfer disgyblion llai na 16 oed	Lefel sylfaen ar gyfer disgyblion llai na 16 oed				
					Yes	No	No	No	No				
<p>(1) I gael manylion ar gymhw ysterau sydd wedi'u cymeradwyo, sgôr pw yntiau a chyfraniad at y throthwy, gweler y Gronfa Ddata Cymw ysterau Cymeradw y Cymru (DAQW) yn http://www.daqw.org.uk/</p> <p>(2) Mae manylion ynglŷn â pha feysydd llafur sydd ym mhob pwn ar gael yn y nodiadau cyfarwyddyd.</p> <p>(3) Cyfrifir y sgôr pw yntiau cyfartalog eang wedi'i gapio gan ddefnyddio'r 8 calnlyniad gorau.</p> <p>(4) Cymhwyster Lefel Mynediad.</p> <p>(5) Defnyddir ar gyfer holl dablau meincodi prydau am ddim. Dangosir y dangosydd yma dim ond am ysgollion uwchradd prifffwrdd.</p> <p>(6) Nodwch mai enwadur y dangosydd yma yw'r disgyblion 15 oed a geisiodd arholiad Cymraeg Iaith Gyntaf, yn hytrach na chyfanswm yr holl ddisgyblion 15 oed.</p> <p>.. Data ddim ar gael.</p>													

Pupils aged 15

Number of pupils aged 15 who were on roll in January 2015 : 108

Percentage of pupils aged 15 who:

	entered at least one qualification	achieved the Level 1 threshold	achieved the Level 2 threshold	achieved the Level 2 threshold including a GCSE pass in English or Welsh first language and mathematics	Core Subject Indicator (2)	Average capped (3) wider points score per pupil	Average wider points score per pupil
School 2014/15	100	96	92	67	65	359	491
LA Area 2014/15	100	97	90	63	61	359	522
Wales 2014/15	99	94	84	58	55	343	531
School 13/14/15	100	97	91	65	60	358	496
School 12/13/14	99	95	87	59	56	348	477

Number of boys aged 15 who were on roll in January 2015 : 52

Percentage of boys aged 15 who:

	entered at least one qualification	achieved the Level 1 threshold	achieved the Level 2 threshold	achieved the Level 2 threshold including a GCSE pass in English or Welsh first language and mathematics	Core Subject Indicator (2)	Average capped (3) wider points score per pupil	Average wider points score per pupil
School 2014/15	100	96	87	65	65	353	481
LA Area 2014/15	99	96	86	59	57	349	503
Wales 2014/15	99	93	81	54	52	332	507
School 13/14/15	99	95	88	64	60	351	489
School 12/13/14	98	93	84	55	51	338	471

Number of girls aged 15 who were on roll in January 2015 : 56

Percentage of girls aged 15 who:

	entered at least one qualification	achieved the Level 1 threshold	achieved the Level 2 threshold	achieved the Level 2 threshold including a GCSE pass in English or Welsh first language and mathematics	Core Subject Indicator (2)	Average capped (3) wider points score per pupil	Average wider points score per pupil
School 2014/15	100	96	96	68	64	365	500
LA Area 2014/15	100	98	95	67	66	370	542
Wales 2014/15	99	96	88	62	58	355	556
School 13/14/15	100	98	93	65	61	365	502
School 12/13/14	99	97	89	64	61	358	484

(1) For details on approved qualifications, point scores and contribution to thresholds, please see the Database for Approved Qualifications in Wales (DAQW) at <http://www.daqw.org.uk/>

(2) For information about which syllabuses are included in each subject area see Notes for Guidance.

(3) Average capped wider point scores are calculated using the best 8 results.

(4) Entry Level Qualification.

(5) Used for all Free School Meal benchmarking tables. This indicator is only shown for mainstream secondary schools.

(6) Note that the denominator for this indicator is the number of 15 year olds who entered Welsh First Language, rather than the total number of 15 year olds.

.. Data not available.

Ysgol Bro Pedr						SSSP 2015			
Summary of School Performance (1)						LA/School No. 667 / 5500			
Pupils aged 15									
Number of pupils aged 15 who were on roll in January 2015 : 108									
Percentage of pupils aged 15 who:									
achieved an A*-C Grade in :						Average Points per pupil in :			
	English / Welsh	English	Welsh (6)	Maths	Science		English / Welsh	Maths	Science
School 2014/15	81	78	82	73	90		43	39	42
LA Area 2014/15	77	74	75	68	87		42	38	45
Wales 2014/15	70	69	75	64	84		39	37	48
School 13/14/15	77	73	76	71	80		42	38	39
School 12/13/14	73	69	78	65	73		40	37	38
Number of boys aged 15 who were on roll in January 2015 : 52									
Percentage of boys aged 15 who:									
achieved an A*-C Grade in :						Average Points per pupil in :			
	English / Welsh	English	Welsh (6)	Maths	Science		English / Welsh	Maths	Science
School 2014/15	77	71	77	75	88		43	40	43
LA Area 2014/15	68	63	66	67	84		40	38	43
Wales 2014/15	62	60	66	64	83		37	37	47
School 13/14/15	72	66	64	73	78		39	39	39
School 12/13/14	66	60	65	63	69		37	37	38
Number of girls aged 15 who were on roll in January 2015 : 56									
Percentage of girls aged 15 who:									
achieved an A*-C Grade in :						Average Points per pupil in :			
	English / Welsh	English	Welsh (6)	Maths	Science		English / Welsh	Maths	Science
School 2014/15	86	84	86	71	91		43	38	42
LA Area 2014/15	87	86	83	69	91		45	39	47
Wales 2014/15	78	77	84	64	85		42	37	49
School 13/14/15	81	80	85	70	81		43	38	40
School 12/13/14	80	79	88	68	76		43	37	39
(1)	For details on approved qualifications, point scores and contribution to thresholds, please (DAQW) at http://www.daqw.org.uk/								
(2)	For information about which syllabuses are included in each subject area see Notes for C								
(3)	Average capped wider point scores are calculated using the best 8 results.								
(4)	Entry Level Qualification.								
(5)	Used for all Free School Meal benchmarking tables. This indicator is only shown for mainstream secondary schools.								
(6)	Note that the denominator for this indicator is the number of 15 year olds who entered We rather than the total number of 15 year olds.								
..	Data not available.								

Pupils aged 15

	Percentage of pupils aged 15 who:		Percentage of boys aged 15 who:		Percentage of girls aged 15 who:	
	achieved one or more ELQ (4) only	achieved no recognised qualification	achieved one or more ELQ (4) only	achieved no recognised qualification	achieved one or more ELQ (4) only	achieved no recognised qualification
School 2014/15	0	0.0	0	0.0	0	0.0
LA Area 2014/15	0	0.4	0	0.5	0	0.3
Wales 2014/15	1	1.2	1	1.5	0	0.9
School 13/14/15	1	0.3	0	0.6	1	0.0
School 12/13/14	1	1.1	0	1.7	2	0.6

Pupils aged 17

	Number of pupils aged 17 who were on roll in		Number of boys aged 17 who were on roll in		Number of girls aged 17 who were on roll in	
	January 2015: 63		January 2015: 20		January 2015: 43	
	Percentage of 17 year old pupils entering a volume equivalent to 2 A levels who achieved the Level 3 threshold	Average wider points score for pupils aged 17	Percentage of 17 year old pupils entering a volume equivalent to 2 A levels who achieved the Level 3 threshold	Average wider points score for pupils aged 17	Percentage of 17 year old pupils entering a volume equivalent to 2 A levels who achieved the Level 3 threshold	Average wider points score for pupils aged 17
School 2014/15	100	910	100	810	100	957
LA Area 2014/15	99	914	98	861	100	952
Wales 2014/15	97	800	96	747	98	846
School 13/14/15	100	733	100	640	100	787
School 12/13/14	100	632	100	549	100	687

(1) For details on approved qualifications, point scores and contribution to thresholds, please see the Database for Approved Qualifications in Wales (DAQW) at <http://www.daqw.org.uk/>

(2) For information about which syllabuses are included in each subject area see Notes for Guidance.

(3) Average capped wider point scores are calculated using the best 8 GCSE results or the vocational equivalent.

(4) Entry Level Qualification.

(5) Used for all Free School Meal benchmarking tables. This indicator is only shown for mainstream secondary schools.

(6) Note that the denominator for this indicator is the number of 15 year olds who entered Welsh First Language, rather than the total number of 15 year olds.

.. Data not available.

